

Nur für Forschungszwecke

CD107a / LAMP1 Monoklonaler Antikörper



Katalog-Nr.:CL555-65051

Allgemeine Informationen

Katalog-Nr.: CL555-65051	GenBank-Zugangsnummer: BC006345	Reinigungsmethode: Protein-G-Reinigung
Größe: 100tests , 5 µl/test	GeneID (NCBI): 3916	CloneNo.: H4A3
Wirt: Maus	Vollständiger Name: lysosomal-associated membrane protein 1	Anregungs-/Emissionsmaxima-Wellenlängen: 554 nm / 570 nm
Isotyp: IgG1, kappa		

Anwendungen

Geprüfte Anwendungen:

FC

Getestete Reaktivität:

Human

Hintergrundinformationen

LAMP1 (CD107a) is a heavily glycosylated membrane protein enriched in the lysosomal membrane. LAMP1 is extensively glycosylated with asparagine-linked oligosaccharides which protect it from intracellular proteolysis (PMID: 10521503). Although LAMP1 is expressed largely in the endosome-lysosomal membrane of cells, it is also found on the plasma membrane (PMID: 16168398). Elevated LAMP1 expression at the cell surface has also been detected during platelet and granulocytic cell activation, as well as in some tumor cells (PMID: 29085473). LAMP1 functions to provide selectins with carbohydrate ligands. This protein has also been shown to be a marker of degranulation on lymphocytes such as CD8+ and NK cells and may also play a role in tumor cell differentiation and metastasis (PMID: 18835598; 29085473; 9426697).

Lagerung

Lagerungsbedingungen:

Store at 2-8°C. Avoid exposure to light. Stable for one year after shipment.

Lagerungspuffer:

PBS with 0.09% sodium azide and 0.5% BSA.

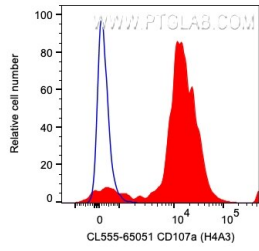
For technical support and original validation data for this product please contact:

T: 1 (888) 4PTGLAB (1-888-478-4522) (toll free in USA), or 1(312) 455-8498 (outside USA)

E: proteintech@ptglab.com
W: ptglab.com

This product is exclusively available under Proteintech Group brand and is not available to purchase from any other manufacturer.

Ausgewählte Validierungsdaten



1X10⁶ human peripheral blood platelets were surface stained with 5 ul CoraLite® Plus 555 Anti-Human CD107a / LAMP1 (CL555-65051, Clone:H4A3) (red) or Mouse IgG1 Isotype Control. Cells were not fixed.