

Nur für Forschungszwecke

# CD3 Monoklonaler Antikörper

Katalog-Nr.:CL555-65077



## Allgemeine Informationen

<b>Katalog-Nr.:</b> CL555-65077	<b>GenBank-Zugangsnummer:</b> BC098236	<b>Reinigungsmethode:</b> Affinitätsreinigung
<b>Größe:</b> 100ug, 200 µg/ml	<b>GeneID (NCBI):</b> 12501	<b>CloneNo.:</b> 17A2
<b>Wirt:</b> Ratte	<b>Vollständiger Name:</b> CD3 antigen, epsilon polypeptide	<b>Anregungs-/Emissionsmaxima-Wellenlängen:</b> 557 nm / 570nm
<b>Isotyp:</b> IgG2b, kappa		

## Anwendungen

**Geprüfte Anwendungen:**  
FC

**Getestete Reaktivität:**  
Maus

## Hintergrundinformationen

CD3 is a multimeric protein associated with the T-cell receptor (TCR) to form a complex involved in antigen recognition and signal transduction (PMID: 15885124). CD3 is composed of CD3γ, δ, ε, and ζ chains (PMID: 1826255). It is expressed by thymocytes in a developmentally regulated manner, T cells, and some NK cells (PMID: 3289580). The TCR recognizes antigens bound to major histocompatibility complex (MHC) molecules. TCR-mediated peptide-MHC recognition is transmitted to the CD3 complex, leading to the intracellular signal transduction (PMID: 11985657).

## Lagerung

**Lagerungsbedingungen:**  
Store at 2-8°C. Avoid exposure to light. Stable for one year after shipment.

**Lagerungspuffer:**  
PBS mit 0,1% Natriumazid und 0,5% BSA, pH 7,3.

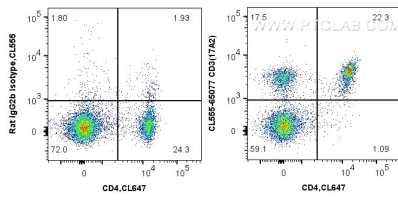
For technical support and original validation data for this product please contact:

T: 1 (888) 4PTGLAB (1-888-478-4522) (toll free in USA), or 1(312) 455-8498 (outside USA)

E: [proteintech@ptglab.com](mailto:proteintech@ptglab.com)  
W: [ptglab.com](http://ptglab.com)

**This product is exclusively available under Proteintech Group brand and is not available to purchase from any other manufacturer.**

## Ausgewählte Validierungsdaten



1x10<sup>6</sup> mouse splenocytes were surface stained with CoraLite® Plus 647 Anti-Mouse CD4 (GK1.5) (CL647-65104, Clone: GK1.5) and 0.5 µg CoraLite® 555 Anti-Mouse CD3 (CL555-65077, Clone: 17A2) or 0.5 µg Isotype Control. Cells were not fixed.