

Nur für Forschungszwecke

CD27 Monoklonaler Antikörper

Katalog-Nr.:CL555-65132



Allgemeine Informationen

Katalog-Nr.: CL555-65132	GenBank-Zugangsnummer: BC012160	Reinigungsmethode: Affinitätsreinigung
Größe: 100tests , 5 µl/test	GeneID (NCBI): 939	CloneNo.: O323
Wirt: Maus	Vollständiger Name: CD27 molecule	Anregungs-/Emissionsmaxima-Wellenlängen: 554 nm / 570 nm
Isotyp: IgG1, kappa	Berechnete Masse: 29 kDa	

Anwendungen

Geprüfte Anwendungen:
FC

Getestete Reaktivität:
Human

Hintergrundinformationen

CD27 (also known as TNFRSF7) is a type I glycoprotein expressed on some B cells and the majority of T cells, and is a member of the tumor necrosis factor (TNF) receptor family. CD27 is required for generation and long-term maintenance of T cell immunity (PMID: 11062504). It is a receptor for CD70 (CD27L). Ligation of CD27 by CD70 induces strong ubiquitination of TRAF and the activation of both canonical and non-canonical NF-kappaB pathways, as well as the JNK pathway (PMID: 19426224). CD27 may also play a role in apoptosis through association with SIVA1.

Lagerung

Lagerungsbedingungen:
Store at 2-8°C. Avoid exposure to light. Stable for one year after shipment.

Lagerungspuffer:
PBS with 0.09% sodium azide and 0.5% BSA.

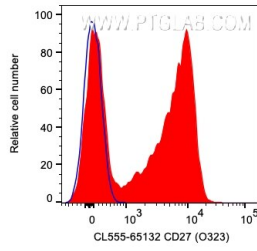
For technical support and original validation data for this product please contact:

T: 1 (888) 4PTGLAB (1-888-478-4522) (toll free in USA), or 1(312) 455-8498 (outside USA)

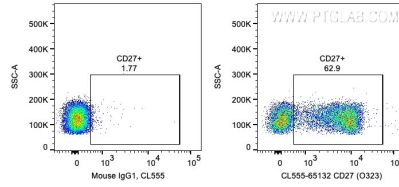
E: proteintech@ptglab.com
W: ptglab.com

This product is exclusively available under Proteintech Group brand and is not available to purchase from any other manufacturer.

Ausgewählte Validierungsdaten



1X10⁶ human PBMCs were surface stained with 5 ul CoraLite® Plus 555 Anti-Human CD27 (CL555-65132, Clone:O323) (red) or Mouse IgG1 Isotype Control. Cells were not fixed. Lymphocytes were gated.



1X10⁶ human PBMCs were surface stained with 5 ul CoraLite® Plus 555 Anti-Human CD27 (CL555-65132, Clone:O323) or Mouse IgG1 Isotype Control. Cells were not fixed. Lymphocytes were gated.