

Nur für Forschungszwecke

CD235a Monoklonaler Antikörper

Katalog-Nr.:CL555-65174



Allgemeine Informationen

Katalog-Nr.: CL555-65174	GenBank-Zugangsnummer: BC005319	Reinigungsmethode: Affinitätsreinigung
Größe: 100tests , 5 µl/test	GeneID (NCBI): 2993	CloneNo.: HIR2
Wirt: Maus	Vollständiger Name: glycophorin A (MNS blood group)	Anregungs-/Emissionsmaxima-Wellenlängen: 554 nm / 570 nm
Isotyp: IgG2b, kappa	Berechnete Masse: 150 aa, 16 kDa	

Anwendungen

Geprüfte Anwendungen:
FC

Getestete Reaktivität:
Human

Hintergrundinformationen

Glycophorin A (GYPA) is the major transmembrane sialoglycoprotein in erythrocytes. It is a dimeric type I transmembrane protein carrying 15 closely clustered O-linked tetrasaccharides capped with sialic acid/N-acetylneuraminic acid (Neu5Ac). This 36 kDa protein represents the major sialoglycoprotein of the red blood cell membrane displaying about one million copies per cell. (PMID: 9490702)

Lagerung

Lagerungsbedingungen:
Store at 2-8°C. Avoid exposure to light. Stable for one year after shipment.

Lagerungspuffer:
PBS with 0.09% sodium azide and 0.5% BSA.

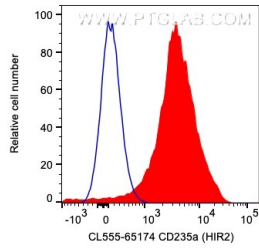
For technical support and original validation data for this product please contact:

T: 1 (888) 4PTGLAB (1-888-478-4522) (toll free in USA), or 1(312) 455-8498 (outside USA)

E: proteintech@ptglab.com
W: ptglab.com

This product is exclusively available under Proteintech Group brand and is not available to purchase from any other manufacturer.

Ausgewählte Validierungsdaten



1X10⁶ human red blood cells were surface stained with 5 ul CoraLite® Plus 555 Anti-Human CD235a (CL555-65174, Clone:HIR2) (red) or Mouse IgG2b Isotype Control. Cells were not fixed.