

Nur für Forschungszwecke

CD68 Monoklonaler Antikörper

Katalog-Nr.:CL555-65187



Allgemeine Informationen

Katalog-Nr.: CL555-65187	GenBank-Zugangsnummer: BC015557	Reinigungsmethode: Affinitätsreinigung
Größe: 100tests , 5 ul/test	GeneID (NCBI): 968	CloneNo.: Y1/82A
Wirt: Maus	Vollständiger Name: CD68 molecule	Anregungs-/Emissionsmaxima-Wellenlängen: 554 nm / 570 nm
Isotyp: IgG2b, kappa	Berechnete Masse: 37 kDa	

Anwendungen

Geprüfte Anwendungen:
FC (Intra)

Getestete Reaktivität:
Human

Hintergrundinformationen

CD68 is a type I transmembrane glycoprotein that is highly expressed by human monocytes and tissue macrophages. It belongs to the lysosomal/endosomal-associated membrane glycoprotein (LAMP) family and primarily localizes to lysosomes and endosomes with a smaller fraction circulating to the cell surface. CD68 is also a member of the scavenger receptor family. It may play a role in phagocytic activities of tissue macrophages.

Lagerung

Lagerungsbedingungen:
Store at 2-8°C. Avoid exposure to light. Stable for one year after shipment.

Lagerungspuffer:
PBS with 0.09% sodium azide and 0.5% BSA.

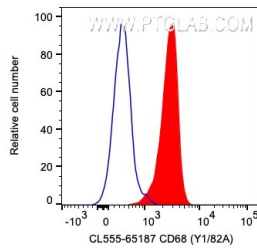
For technical support and original validation data for this product please contact:

T: 1 (888) 4PTGLAB (1-888-478-4522) (toll free in USA), or 1(312) 455-8498 (outside USA)

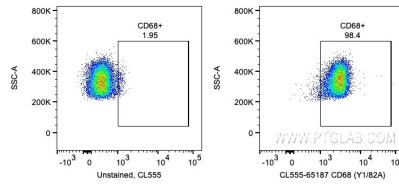
E: proteintech@ptglab.com
W: ptglab.com

This product is exclusively available under Proteintech Group brand and is not available to purchase from any other manufacturer.

Ausgewählte Validierungsdaten



1X10⁶ human PBMCs were intracellularly stained with 5 μ l CoraLite[®] Plus 555 Anti-Human CD68 (CL555-65187, Clone: Y1/82A) (red) or unstained. Cells were fixed and permeabilized with Transcription Factor Staining Buffer Kit (PF00011). Monocytes were gated.



1X10⁶ human PBMCs were intracellularly stained with 5 μ l CoraLite[®] Plus 555 Anti-Human CD68 (CL555-65187, Clone: Y1/82A) or unstained. Cells were fixed and permeabilized with Transcription Factor Staining Buffer Kit (PF00011). Monocytes were gated.