

Nur für Forschungszwecke

# CD2 Monoklonaler Antikörper

Katalog-Nr.:CL555-65192



## Allgemeine Informationen

Katalog-Nr.: CL555-65192	GenBank-Zugangsnummer: BC033583	Reinigungsmethode: Affinitätsreinigung
Größe: 100tests , 5 ul/test	GeneID (NCBI): 914	CloneNo.: TS1/8
Wirt: Maus	Vollständiger Name: CD2 molecule	Anregungs-/Emissionsmaxima- Wellenlängen: 554 nm / 570 nm
Isotyp: IgG1, kappa	Berechnete Masse: 351 aa, 39 kDa	

## Anwendungen

Geprüfte Anwendungen:  
FC  
  
Getestete Reaktivität:  
Human

## Hintergrundinformationen

CD2 is a cell surface glycoprotein present on a majority of thymocytes, all mature T cells and subset of NK cells but not on B lymphocytes. It is a pan T-cell marker. CD2 interacts with lymphocyte function-associated antigen (LFA-3/CD58) and CD48/BCM1 to mediate adhesion between T-cells and other cell types. CD2 is implicated in the triggering of T-cells, the cytoplasmic domain is implicated in the signaling function.

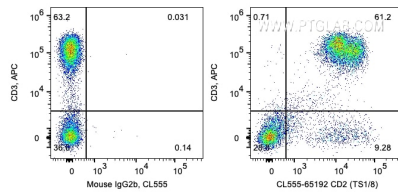
## Lagerung

Lagerungsbedingungen:  
Store at 2-8°C. Avoid exposure to light. Stable for one year after shipment.  
Lagerungspuffer:  
PBS with 0.09% sodium azide and 0.5% BSA.

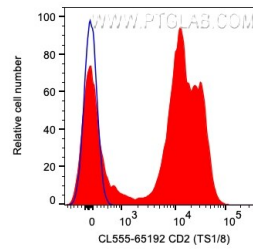
For technical support and original validation data for this product please contact:  
T: 1 (888) 4PTGLAB (1-888-478-4522) (toll free in USA), or 1(312) 455-8498 (outside USA)  
E: [proteintech@ptglab.com](mailto:proteintech@ptglab.com)  
W: [ptglab.com](http://ptglab.com)

This product is exclusively available under Proteintech Group brand and is not available to purchase from any other manufacturer.

## Ausgewählte Validierungsdaten



1X10<sup>6</sup> human PBMCs were surface co-stained with APC Anti-Human CD3 and 5 ul CoraLite® Plus 555 Anti-Human CD2 (CL555-65192, Clone:TS1/8) or Mouse IgG2b Isotype Control. Cells were not fixed. Lymphocytes were gated.



1X10<sup>6</sup> human PBMCs were surface stained with 5 ul CoraLite® Plus 555 Anti-Human CD2 (CL555-65192, Clone:TS1/8) (red) or Mouse IgG2b Isotype Control. Cells were not fixed. Lymphocytes were gated.