

Nur für Forschungszwecke

HLA-DR Monoklonaler Antikörper

Katalog-Nr.:CL555-65218



Allgemeine Informationen

Katalog-Nr.: CL555-65218	GenBank-Zugangsnummer: BC032350	Reinigungsmethode: Protein-A-Reinigung
Größe: 100tests , 5 µl/test	GeneID (NCBI): 3122	CloneNo.: L243
Wirt: Maus	Vollständiger Name: major histocompatibility complex, class II, DR alpha	Anregungs-/Emissionsmaxima- Wellenlängen: 554 nm / 570 nm
Isotyp: IgG2a, kappa	Berechnete Masse: 254 aa, 29 kDa	

Anwendungen

Geprüfte Anwendungen:
FC

Getestete Reaktivität:
Human

Hintergrundinformationen

Lagerung

Lagerungsbedingungen:
Store at 2-8°C. Avoid exposure to light. Stable for one year after shipment.
Lagerungspuffer:
PBS with 0.09% sodium azide and 0.5% BSA.

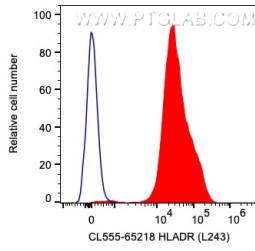
For technical support and original validation data for this product please contact:

T: 1 (888) 4PTGLAB (1-888-478-4522) (toll free
in USA), or 1(312) 455-8498 (outside USA)

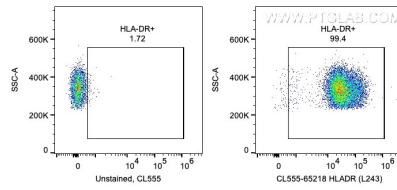
E: proteintech@ptglab.com
W: ptglab.com

This product is exclusively available under Proteintech Group brand and is not available to purchase from any other manufacturer.

Ausgewählte Validierungsdaten



1X10⁶ human PBMCs were surface stained with 5 ul CoraLite® Plus 555 Anti-Human HLA-DR (CL555-65218, Clone:L243) (red) or unstained. Cells were not fixed. Monocytes were gated.



1X10⁶ human PBMCs were surface stained with 5 ul CoraLite® Plus 555 Anti-Human HLA-DR (CL555-65218, Clone:L243) or unstained. Cells were not fixed. Monocytes were gated.