

Nur für Forschungszwecke

# CD85j / LILRB1 Monoklonaler Antikörper

Katalog-Nr.:CL555-65238



## Allgemeine Informationen

<b>Katalog-Nr.:</b> CL555-65238	<b>GenBank-Zugangsnummer:</b> BC015731	<b>Reinigungsmethode:</b> N/A
<b>Größe:</b> 100tests , 5 ul/test	<b>GeneID (NCBI):</b> 10859	<b>CloneNo.:</b> GHI/75
<b>Wirt:</b> Maus	<b>Vollständiger Name:</b> leukocyte immunoglobulin-like receptor, subfamily B (with TM and ITIM domains), member 1	<b>Anregungs-/Emissionsmaxima-Wellenlängen:</b> 554 nm / 570 nm
<b>Isotyp:</b> IgG2b, kappa	<b>Berechnete Masse:</b> 71 kDa	

## Anwendungen

**Geprüfte Anwendungen:**  
FC

**Getestete Reaktivität:**  
Human

## Hintergrundinformationen

### Lagerung

**Lagerungsbedingungen:**  
Store at 2-8°C. Avoid exposure to light. Stable for one year after shipment.

**Lagerungspuffer:**  
PBS with 0.09% sodium azide and 0.5% BSA.

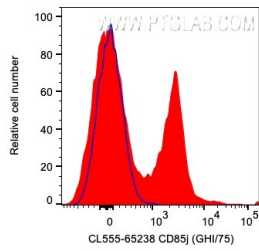
For technical support and original validation data for this product please contact:

T: 1 (888) 4PTGLAB (1-888-478-4522) (toll free in USA), or 1(312) 455-8498 (outside USA)

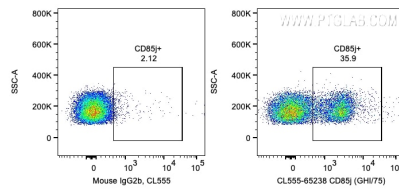
E: [proteintech@ptglab.com](mailto:proteintech@ptglab.com)  
W: [ptglab.com](http://ptglab.com)

This product is exclusively available under Proteintech Group brand and is not available to purchase from any other manufacturer.

## Ausgewählte Validierungsdaten



1X10<sup>6</sup> human PBMCs were surface stained with 5 ul CoraLite® Plus 555 Anti-Human CD85j / LILRB1 (CL555-65238, Clone:GHI/75) or Mouse IgG2b Isotype Control (66360-3-Ig, Clone: K11B8C4B5). Cells were not fixed. Lymphocytes were gated.



1X10<sup>6</sup> human PBMCs were surface stained with 5 ul CoraLite® Plus 555 Anti-Human CD85j / LILRB1 (CL555-65238, Clone:GHI/75) or Mouse IgG2b Isotype Control. Cells were not fixed. Lymphocytes were gated.