

Nur für Forschungszwecke

# Bcl-XL Monoklonaler Antikörper

Katalog-Nr.:CL555-66020



## Allgemeine Informationen

<b>Katalog-Nr.:</b> CL555-66020	<b>GenBank-Zugangsnummer:</b> BC019307	<b>Reinigungsmethode:</b> Protein-A-Reinigung
<b>Größe:</b> 100ul , Konzentration: 1000 µg/ml von598 Nanodrop;	<b>GeneID (NCBI):</b> Vollständiger Name: BCL2-like 1	<b>CloneNo.:</b> 4C12A6
<b>Wirt:</b> Maus	<b>Berechnete Masse:</b> 26 kDa	<b>Anregungs-/Emissionsmaxima- Wellenlängen:</b> 557 nm / 570nm
<b>Isotyp:</b> IgG2b	<b>Beobachtete Masse:</b> 30 kDa	
<b>Immunogen Katalognummer:</b> AG18037		

## Anwendungen

**Geprüfte Anwendungen:**  
FC (Intra)

**Getestete Reaktivität:**  
Human, Maus, Ratte

## Hintergrundinformationen

BCL2L1 is a member of the BCL-2 protein family. BCL2L1 is expressed as three isoforms, Bcl-X(L), Bcl-X(s) and Bcl-X(beta), and is located at the outer mitochondrial membrane. The Bcl-XL isoform is a 233 amino acid protein, acting as an apoptotic inhibitor. Bcl-XL can form heterodimers with BAX, BAK or BCL2, and the heterodimerization with BAX does not seem to be required for anti-apoptotic activity. The Bcl-XS isoform is a shorter variant that is 178 amino acids in length and lacks a 63 amino acid region (amino acids 126-188), acting as an apoptotic activator.

## Lagerung

**Lagerungsbedingungen:**  
Bei -20°C lagern. Vor Licht schützen.  
**Lagerungspuffer:**  
BS mit 50% Glycerin, 0,05% Proclin300, 0,5% BSA, pH 7,3.  
Aliquotieren ist nicht notwendig bei -20°C Lagerung

**\*\*\* 20ul-Größen enthalten 0.1% BSA**

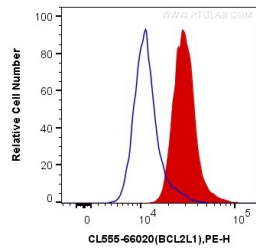
For technical support and original validation data for this product please contact:

T: 1 (888) 4PTGLAB (1-888-478-4522) (toll free  
in USA), or 1(312) 455-8498 (outside USA)

E: [proteintech@ptglab.com](mailto:proteintech@ptglab.com)  
W: [ptglab.com](http://ptglab.com)

**This product is exclusively available under Proteintech Group brand and is not available to purchase from any other manufacturer.**

## Ausgewählte Validierungsdaten



1X10<sup>6</sup> Jurkat cells were intracellularly stained with 0.2 ug CoraLite®555 Anti-Human Bcl-XL (CL555-66020, Clone:4C12A6) (red), or 0.2 ug Control Antibody. Cells were fixed with 4% PFA and permeabilized with Flow Cytometry Perm Buffer (PF00011-C).