

Nur für Forschungszwecke

# Alpha Tubulin Monoklonaler Antikörper

Katalog-Nr.:CL555-66031



## Allgemeine Informationen

<b>Katalog-Nr.:</b> CL555-66031	<b>GenBank-Zugangsnummer:</b> BC009314	<b>Reinigungsmethode:</b> Protein-A-Reinigung
<b>Größe:</b> 100ul , Konzentration: 1000 µg/ml von10376 Nanodrop;	<b>GeneID (NCBI):</b> 10376	<b>CloneNo.:</b> 1E4C11
<b>Wirt:</b> Maus	<b>Vollständiger Name:</b> tubulin, alpha 1b	<b>Empfohlene Verdünnungen:</b> IF 1:400-1:1600
<b>Isotyp:</b> IgG2b	<b>Berechnete Masse:</b> 50 kDa	<b>Anregungs-/Emissionsmaxima-Wellenlängen:</b> 557 nm / 570nm
<b>Immunogen Katalognummer:</b> AG18034	<b>Beobachtete Masse:</b> 50-55 kDa	

## Anwendungen

<b>Geprüfte Anwendungen:</b> FC (Intra), IF	<b>Positivkontrollen:</b> IF : HeLa-Zellen,
<b>Getestete Reaktivität:</b> Human, Hund, Maus, Ratte	

## Hintergrundinformationen

There are five tubulins in human cells: alpha, beta, gamma, delta, and epsilon. Tubulins are conserved across species. They form heterodimers, which multimerize to form a microtubule filament. An alpha and beta tubulin heterodimer is the basic structural unit of microtubules. The heterodimer does not come apart once formed. The alpha and beta tubulins, which are each about 55 kDa MW, are homologous but not identical. Alpha tubulin is useful for scientists across fields as an internal control due to its high, ubiquitous expression pattern. Tubulin expression may vary according to resistance to antimicrobial and antimitotic drugs. This antibody specifically recognizes Tubulin Alpha.

## Lagerung

**Lagerungsbedingungen:**  
Bei -20°C lagern. Vor Licht schützen.  
**Lagerungspuffer:**  
BS mit 50% Glycerin, 0,05% Proclin300, 0,5% BSA, pH 7,3.  
Aliquotieren ist nicht notwendig bei -20°C Lagerung

\*\*\* 20ul-Größen enthalten 0.1% BSA

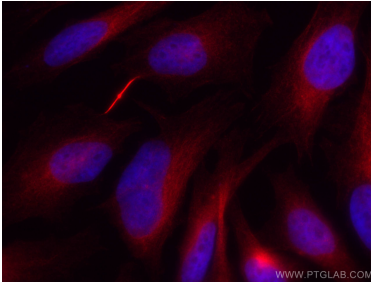
For technical support and original validation data for this product please contact:

T: 1 (888) 4PTGLAB (1-888-478-4522) (toll free in USA), or 1(312) 455-8498 (outside USA)

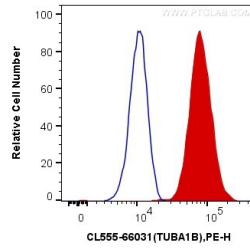
E: [proteintech@ptglab.com](mailto:proteintech@ptglab.com)  
W: [ptglab.com](http://ptglab.com)

This product is exclusively available under Proteintech Group brand and is not available to purchase from any other manufacturer.

## Ausgewählte Validierungsdaten



Immunofluorescent analysis of (4% PFA) fixed HeLa cells using Coralite®555 Alpha Tubulin antibody (CL555-66031, Clone: 1E4C11) at dilution of 1:800.



1X10<sup>6</sup> HeLa cells were intracellularly stained with 0.4 ug Coralite®555 Anti-Human Alpha Tubulin (CL555-66031, Clone:1E4C11) (red), or 0.4 ug Control Antibody. Cells were fixed with 4% PFA and permeabilized with Flow Cytometry Perm Buffer (PF00011-C).