

Nur für Forschungszwecke

# Lamin B1 Monoklonaler Antikörper

Katalog-Nr.:CL555-66095

Vorgestelltes Produkt



## Allgemeine Informationen

<b>Katalog-Nr.:</b> CL555-66095	<b>GenBank-Zugangsnummer:</b> BC012295	<b>Reinigungsmethode:</b> Protein-G-Reinigung
<b>Größe:</b> 100ul , Konzentration: 1000 µg/ml von4001 Nanodrop;	<b>GeneID (NCBI):</b> 4001	<b>CloneNo.:</b> 3C10G12
<b>Wirt:</b> Maus	<b>Vollständiger Name:</b> lamin B1	<b>Empfohlene Verdünnungen:</b> IF 1:400-1:1600
<b>Isotyp:</b> IgG1	<b>Berechnete Masse:</b> 66 kDa	<b>Anregungs-/Emissionsmaxima-Wellenlängen:</b> 557 nm / 570nm
<b>Immunogen Katalognummer:</b> AG20522	<b>Beobachtete Masse:</b> 66-70 kDa	

## Anwendungen

<b>Geprüfte Anwendungen:</b> FC (Intra), IF	<b>Positivkontrollen:</b> IF : MCF-7-Zellen, U2OS-Zellen
<b>Getestete Reaktivität:</b> Human, Maus, Ratte	

## Hintergrundinformationen

Lamins are components of the nuclear lamina, a fibrous layer on the nucleoplasmic side of the inner nuclear membrane, which is thought to provide a framework for the nuclear envelope and may also interact with chromatin. The nuclear lamina consists of a two-dimensional matrix of proteins located next to the inner nuclear membrane. The lamin family of proteins make up the matrix and are highly conserved in evolution. During mitosis, the lamina matrix is reversibly disassembled as the lamin proteins are phosphorylated. Vertebrate lamins consist of two types, A and B. This gene encodes one of the two B type proteins, B1. This protein is not suitable for samples where the nuclear envelope has been removed.

## Lagerung

**Lagerungsbedingungen:**  
Bei -20°C lagern. Vor Licht schützen. Nach dem Versand ein Jahr stabil.  
**Lagerungspuffer:**  
BS mit 50% Glycerin, 0,05% Proclin300, 0,5% BSA, pH 7,3.  
**Aliquotieren ist nicht notwendig bei -20°C Lagerung**

\*\*\* 20ul-Größen enthalten 0.1% BSA

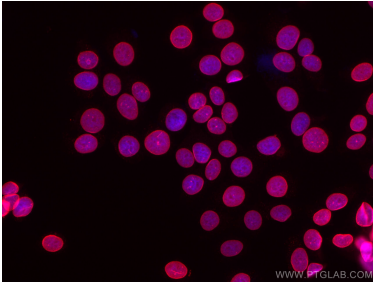
For technical support and original validation data for this product please contact:

T: 1 (888) 4PTGLAB (1-888-478-4522) (toll free in USA), or 1(312) 455-8498 (outside USA)

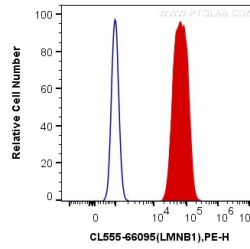
E: [proteintech@ptglab.com](mailto:proteintech@ptglab.com)  
W: [ptglab.com](http://ptglab.com)

This product is exclusively available under Proteintech Group brand and is not available to purchase from any other manufacturer.

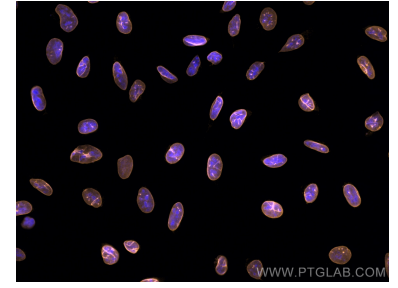
## Ausgewählte Validierungsdaten



Immunofluorescent analysis of (4% PFA) fixed MCF-7 cells using CoraLite@555 Lamin B1 antibody (CL555-66095, Clone: 3C10G12) at dilution of 1:800.



1X10<sup>6</sup> HeLa cells were intracellularly stained with 0.25 ug CoraLite@555 Anti-Human Lamin B1 (CL555-66095, Clone:3C10G12) (red), or 0.25 ug Control Antibody. Cells were fixed and permeabilized with Transcription Factor Staining Buffer Kit (PF00011).



Immunofluorescent analysis of (-20°C Methanol) fixed U2OS cells using CoraLite@555 Lamin B1 antibody (CL555-66095, Clone: 3C10G12) at dilution of 1:1000.