

Nur für Forschungszwecke

acetylated Tubulin(Lys40) Monoklonaler Antikörper



Katalog-Nr.:CL555-66200

Allgemeine Informationen

Katalog-Nr.: CL555-66200	GenBank-Zugangsnummer: NM_006009	Reinigungsmethode: Protein-G-Reinigung
Größe: 100ul , Konzentration: 1000 µg/ml von7846	GeneID (NCBI): von7846	CloneNo.: 7E5H8
Nanodrop;	Vollständiger Name: tubulin, alpha 1a	Empfohlene Verdünnungen: IF 1:50-1:500
Wirt: Maus	Berechnete Masse: 52 kDa	Anregungs-/Emissionsmaxima-Wellenlängen: 557 nm / 570nm
Isotyp: IgG1	Beobachtete Masse: 50-55 kDa	

Anwendungen

Geprüfte Anwendungen: IF	Positivkontrollen: IF : MDCK-Zellen,
Getestete Reaktivität: Hausschwein, Human, Hund, Maus, Ratte	

Hintergrundinformationen

Tubulin, composed of heterodimers of alpha and beta tubulin, is the mainly component of microtubules which play important roles in cell motility, mitosis, and intracellular vesicle transport. Both alpha and beta tubulin undergo several posttranslational modifications such as polyglutamylation and acetylation/deacetylation. Tubulin acetylation occurs on lysine-40 at the N-terminal of alpha tubulin and is conserved across species. The histone deacetylase HDAC6 and SIRT2 has been identified as tubulin deacetylases. Reversible acetylation of alpha tubulin may be implicated in regulating microtubule stability, cell motility, and axon regeneration. The level of acetylated tubulin has been linked to epithelial malignancies and sensitivity to chemotherapy. In addition, acetylated tubulin has been widely used as a marker for primary cilia. This antibody is specific to the acetylated tubulin; it does not recognize non-acetylated tubulin. (24268707, 23881549)

Lagerung

Lagerungsbedingungen:
Bei -20°C lagern. Vor Licht schützen.
Lagerungspuffer:
BS mit 50% Glycerin, 0,05% Proclin300, 0,5% BSA, pH 7,3.
Aliquotieren ist nicht notwendig bei -20°C Lagerung

***** 20ul-Größen enthalten 0.1% BSA**

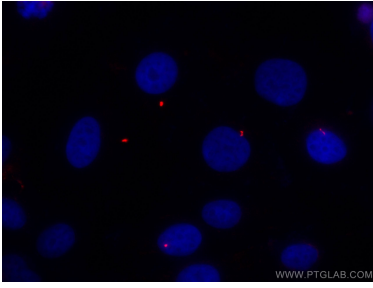
For technical support and original validation data for this product please contact:

T: 1 (888) 4PTGLAB (1-888-478-4522) (toll free
in USA), or 1(312) 455-8498 (outside USA)

E: proteintech@ptglab.com
W: ptglab.com

This product is exclusively available under Proteintech Group brand and is not available to purchase from any other manufacturer.

Ausgewählte Validierungsdaten



Immunofluorescent analysis of (4% PFA) fixed MDCK cells using CoraLite®555 acetylated Tubulin(Lys40) antibody (CL555-66200, Clone: 7E5H8) at dilution of 1:200.