

Nur für Forschungszwecke

# IgG1 Isotype Control Monoklonaler Antikörper



Katalog-Nr.:CL555-66360-1

## Allgemeine Informationen

<b>Katalog-Nr.:</b> CL555-66360-1	<b>GenBank-Zugangsnummer:</b> GeneID (NCBI):	<b>Reinigungsmethode:</b> Protein-G-Reinigung
<b>Größe:</b> 100ug , Konzentration: 200 µg/mL von Nanodrop;	<b>Vollständiger Name:</b>	<b>CloneNo.:</b> 1F8D3
<b>Wirt:</b> Maus		<b>Anregungs-/Emissionsmaxima-Wellenlängen:</b> 554 nm / 570 nm
<b>Isotyp:</b> IgG1		

## Anwendungen

**Geprüfte Anwendungen:**  
FC

**Getestete Reaktivität:**  
Megathura Crenulata

## Hintergrundinformationen

This antibody is used as the isotype control of mouse IgG1 (Kappa). It can be used as the isotype control in Flow Cytometry, Immuno-Precipitation and other experiments. The immunogen of this antibody is Keyhole Limpet Hemocyanin (KLH).

## Lagerung

**Lagerungsbedingungen:**  
Store at 2-8°C. Avoid exposure to light. Stable for one year after shipment.

**Lagerungspuffer:**  
PBS with 0.09% sodium azide and 0.5% BSA.

**\*\*\* 20ul-Größen enthalten 0.1% BSA**

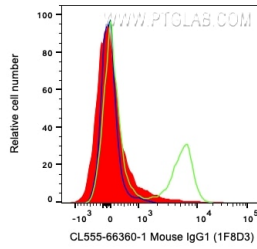
For technical support and original validation data for this product please contact:

T: 1 (888) 4PTGLAB (1-888-478-4522) (toll free in USA), or 1(312) 455-8498 (outside USA)

E: [proteintech@ptglab.com](mailto:proteintech@ptglab.com)  
W: [ptglab.com](http://ptglab.com)

**This product is exclusively available under Proteintech Group brand and is not available to purchase from any other manufacturer.**

## Ausgewählte Validierungsdaten



$1 \times 10^6$  human PBMCs were surface stained with 0.2  $\mu$ g Coralite® Plus 555 Anti-Mouse IgG1 isotype control (CL555-66360-1, Clone:1F8D3) (red), Anti-Human CD19 (green), or unstained (blue). Cells were not fixed. Lymphocytes were gated.