

Nur für Forschungszwecke

# Cytokeratin 7 Monoklonaler Antikörper



Katalog-Nr.:CL555-66483

Vorgestelltes Produkt

## Allgemeine Informationen

<b>Katalog-Nr.:</b> CL555-66483	<b>GenBank-Zugangsnummer:</b> BC002700	<b>Reinigungsmethode:</b> Protein-A-Reinigung
<b>Größe:</b> 100ul , Konzentration: 1000 µg/ml von3855	<b>GeneID (NCBI):</b> 3855	<b>CloneNo.:</b> 2E1G5
<b>Nanodrop;</b>	<b>Vollständiger Name:</b> keratin 7	<b>Empfohlene Verdünnungen:</b> IF 1:50-1:500
<b>Wirt:</b> Maus	<b>Berechnete Masse:</b> 469 aa, 51 kDa	<b>Anregungs-/Emissionsmaxima-Wellenlängen:</b> 557 nm / 570nm
<b>Isotyp:</b> IgG2a	<b>Beobachtete Masse:</b> 51 kDa	
<b>Immunogen Katalognummer:</b> AG7895		

## Anwendungen

<b>Geprüfte Anwendungen:</b> FC(Intra), IF	<b>Positivkontrollen:</b> IF : humanes Prostatakarzinomgewebe,
<b>Getestete Reaktivität:</b> Human	

## Hintergrundinformationen

Keratins are a large family of proteins that form the intermediate filament cytoskeleton of epithelial cells, which are classified into two major sequence types. Type I keratins are a group of acidic intermediate filament proteins, including K9-K23, and the hair keratins Ha1-Ha8. Type II keratins are the basic or neutral counterparts to the acidic type I keratins, including K1-K8, and the hair keratins, Hb1-Hb6. KRT7, also named as cytokeratin 7, is one member of type II basic cytokeratin. It is specifically expressed in the simple epithelia lining the cavities of the internal organs and in the gland ducts and blood vessels, and their neoplasms. KRT7 is marker of epithelial tissues, but not present in carcinomas of stratified squamous cell origin. This antibody is specifically against KRT7.

## Lagerung

**Lagerungsbedingungen:**  
Bei -20°C lagern. Vor Licht schützen. Nach dem Versand ein Jahr stabil.  
**Lagerungspuffer:**  
BS mit 50% Glycerin, 0,05% Proclin300, 0,5% BSA, pH 7,3.  
Aliquotieren ist nicht notwendig bei -20°C Lagerung

\*\*\* 20ul-Größen enthalten 0.1% BSA

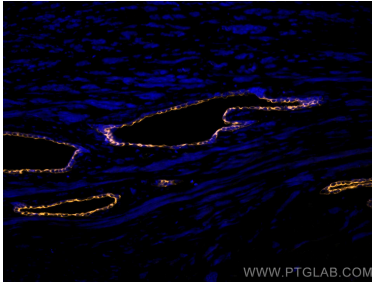
For technical support and original validation data for this product please contact:

T: 1 (888) 4PTGLAB (1-888-478-4522) (toll free in USA), or 1(312) 455-8498 (outside USA)

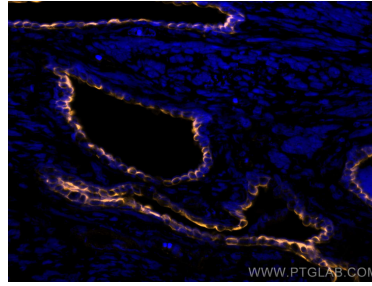
E: [proteintech@ptglab.com](mailto:proteintech@ptglab.com)  
W: [ptglab.com](http://ptglab.com)

This product is exclusively available under Proteintech Group brand and is not available to purchase from any other manufacturer.

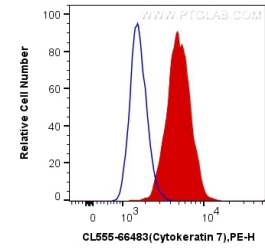
## Ausgewählte Validierungsdaten



Immunofluorescent analysis of (4% PFA) fixed human prostate cancer tissue using CoraLite®555 Cytokeratin 7 antibody (CL555-66483, Clone: 2E1G5 ) at dilution of 1:200.



Immunofluorescent analysis of (4% PFA) fixed human prostate cancer tissue using CoraLite®555 Cytokeratin 7 antibody (CL555-66483, Clone: 2E1G5 ) at dilution of 1:200.



1X10<sup>6</sup> HeLa cells were intracellularly stained with 0.5 ug CoraLite®555 Anti-Human Cytokeratin 7 (CL555-66483, Clone:2E1G5) (red), or 0.5 ug Control Antibody. Cells were fixed with 4% PFA and permeabilized with Flow Cytometry Perm Buffer (PF00011-C).