

Nur für Forschungszwecke

Bcl2 Monoklonaler Antikörper

Katalog-Nr.:CL555-66799



Allgemeine Informationen

Katalog-Nr.: CL555-66799	GenBank-Zugangsnummer: NM-009741	Reinigungsmethode: Protein-G-Reinigung
Größe: 100ul , Konzentration: 1000 µg/ml von12043	GeneID (NCBI): 12043	CloneNo.: 1B5B9
Nanodrop;	Vollständiger Name: B-cell leukemia/lymphoma 2	Empfohlene Verdünnungen: IF 1:50-1:500
Wirt: Maus	Berechnete Masse: 26 kDa	Anregungs-/Emissionsmaxima-Wellenlängen: 557 nm / 570nm
Isotyp: IgG1	Beobachtete Masse: 26 kDa	
Immunogen Katalognummer: AG24261		

Anwendungen

Geprüfte Anwendungen: FC (Intra), IF	Positivkontrollen: IF : NIH/3T3-Zellen,
Getestete Reaktivität: Maus	

Hintergrundinformationen

Bcl2 is a member of the B cell lymphoma 2 protein family. Members of this family regulate cell death in multiple cell types and can have either proapoptotic or antiapoptotic activities. The protein encoded by this gene inhibits mitochondrial-mediated apoptosis. This protein is an integral outer mitochondrial membrane protein that functions as part of signaling pathway that controls mitochondrial permeability in response to apoptotic stimuli. This protein may also play a role in neuron cell survival and autophagy. Abnormal expression and chromosomal translocations of this gene are associated with cancer progression in numerous tissues.

Lagerung

Lagerungsbedingungen:
Bei -20°C lagern. Vor Licht schützen.
Lagerungspuffer:
BS mit 50% Glycerin, 0,05% Proclin300, 0,5% BSA, pH 7,3.
Aliquotieren ist nicht notwendig bei -20°C Lagerung

***** 20ul-Größen enthalten 0.1% BSA**

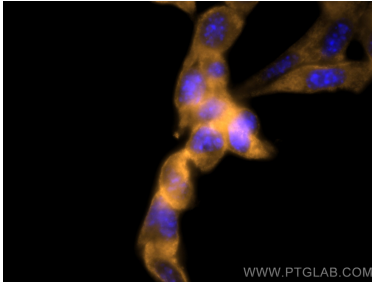
For technical support and original validation data for this product please contact:

T: 1 (888) 4PTGLAB (1-888-478-4522) (toll free in USA), or 1(312) 455-8498 (outside USA)

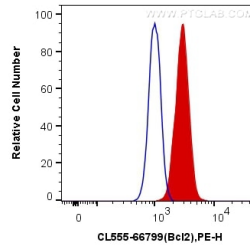
E: proteintech@ptglab.com
W: ptglab.com

This product is exclusively available under Proteintech Group brand and is not available to purchase from any other manufacturer.

Ausgewählte Validierungsdaten



Immunofluorescent analysis of (-20°C Methanol) fixed NIH/3T3 cells using Coralite@555 Bcl2 antibody (CL555-66799, Clone: 1B5B9) at dilution of 1:200.



1X10⁶ NIH/3T3 cells were intracellularly stained with 0.4 ug Coralite@555 Anti-Mouse Bcl2 (CL555-66799, Clone:1B5B9) (red), or 0.4 ug Control Antibody. Cells were fixed with 4% PFA and permeabilized with Flow Cytometry Perm Buffer (PF00011-C).