

Nur für Forschungszwecke

LARP1 Monoklonaler Antikörper

Katalog-Nr.:CL555-67810



Allgemeine Informationen

Katalog-Nr.: CL555-67810	GenBank-Zugangsnummer: BC033856	Reinigungsmethode: Protein-G-Reinigung
Größe: 100ul , Konzentration: 1000 µg/ml von23367	GeneID (NCBI): 23367	CloneNo.: 2E9F2
Nanodrop;	Vollständiger Name: La ribonucleoprotein domain family, member 1	Empfohlene Verdünnungen: IF 1:200-1:800
Wirt: Maus	Berechnete Masse: 1096 aa, 124 kDa	Anregungs-/Emissionsmaxima-Wellenlängen: 557 nm / 570nm
Isotyp: IgG1	Beobachtete Masse: 140-150 kDa	
Immunogen Katalognummer: AG29993		

Anwendungen

Geprüfte Anwendungen: FC (Intra), IF	Positivkontrollen: IF : HepG2-Zellen,
Getestete Reaktivität: Human, Maus, Ratte	

Hintergrundinformationen

LARP1, full named as La-related Protein 1, is an oncogenic RNA-binding protein required for ribosome biogenesis and cancer cell survival. (PMID: 32286153)It's has been proposed to function downstream of mTORC1 to regulate the translation of 5'TOP mRNAs such as those encoding ribosome proteins (RP). (PMID: 28650797) LARP1 has 2 isoforms with MW of 123-150kDa. With CL647, immunoflorecence detected location in cytoplasm.

Lagerung

Lagerungsbedingungen:
Bei -20°C lagern. Vor Licht schützen. Nach dem Versand ein Jahr stabil.
Lagerungspuffer:
BS mit 50% Glycerin, 0,05% Proclin300, 0,5% BSA, pH 7,3.
Aliquotieren ist nicht notwendig bei -20°C Lagerung

***** 20ul-Größen enthalten 0.1% BSA**

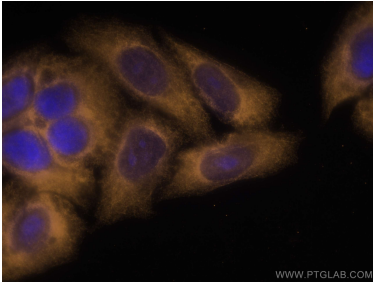
For technical support and original validation data for this product please contact:

T: 1 (888) 4PTGLAB (1-888-478-4522) (toll free in USA), or 1(312) 455-8498 (outside USA)

E: proteintech@ptglab.com
W: ptglab.com

This product is exclusively available under Proteintech Group brand and is not available to purchase from any other manufacturer.

Ausgewählte Validierungsdaten



Immunofluorescent analysis of (-20°C Ethanol) fixed HepG2 cells using CoraLite®555 LARP1 antibody (CL555-67810, Clone: 2E9F2) at dilution of 1:400.



1X10⁶ HepG2 cells were intracellularly stained with 0.4 ug CoraLite®555 Anti-Human LARP1 (CL555-67810, Clone:2E9F2) (red), or 0.4 ug Control Antibody. Cells were fixed with 4% PFA and permeabilized with Flow Cytometry Perm Buffer (PF00011-C).