

Nur für Forschungszwecke

Phospho-S6 Ribosomal protein (Ser236) Rekombinanter Antikörper



Katalog-Nr.:CL555-80206

Allgemeine Informationen

Katalog-Nr.: CL555-80206	GenBank-Zugangsnummer: BC000524	Reinigungsmethode: Protein-A-Reinigung
Größe: 100ul , Konzentration: 1000 µg/ml von6194	GeneID (NCBI): von6194	CloneNo.: 7K17
Nanodrop;	Vollständiger Name: ribosomal protein S6	Anregungs-/Emissionsmaxima-Wellenlängen: 557 nm / 570 nm
Wirt: Kaninchen	Berechnete Masse: 29 kDa	
Isotyp: IgG	Beobachtete Masse: 32 kDa	

Anwendungen

Geprüfte Anwendungen:
FC (Intra)

Getestete Reaktivität:
Human, Maus

Hintergrundinformationen

Ribosomal protein S6 (RPS6) is one of the components of the 40S ribosomal subunit. RPS6 has been functionally regarded as the stimulator and/or inhibitor of certain types of mRNA translation, as well as the regulator of cellular metabolisms, cells size, survival and proliferation. RPS6 is phosphorylated at multiple sites, comprised between Ser235 and Ser247, by the p70 rpS6 kinase (S6K) 1, which is a major downstream effector of the mammalian target of rapamycin complex 1 (mTORC1). Phosphorylation of RPS6 at the dual site Ser235/236 occurs also independently of mTORC1, via the p90 ribosomal S6 kinases (RSK), which are activated by the extracellular signal-regulated kinases (ERK). Recent studies performed in pancreatic β -cells identified PKA as an additional RPS6 kinase, specifically involved in the phosphorylation of Ser235/236. (PMID: 26490682, PMID: 21814187, PMID: 31112404). 80206-1-RR specifically recognizes the phosphorylation site of Ser236 or dual site Ser235/236.

Lagerung

Lagerungsbedingungen:
Bei -20°C lagern. Vor Licht schützen. Nach dem Versand ein Jahr stabil.

Lagerungspuffer:
BS mit 50% Glycerin, 0,05% Proclin300, 0,5% BSA, pH 7,3.

Aliquotieren ist nicht notwendig bei -20°C Lagerung

***** 20ul-Größen enthalten 0.1% BSA**

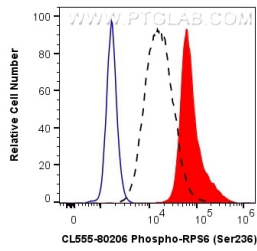
For technical support and original validation data for this product please contact:

T: 1 (888) 4PTGLAB (1-888-478-4522) (toll free
in USA), or 1(312) 455-8498 (outside USA)

E: proteintech@ptglab.com
W: ptglab.com

This product is exclusively available under Proteintech Group brand and is not available to purchase from any other manufacturer.

Ausgewählte Validierungsdaten



1X10⁶ HEK-293 cells untreated (dashed lines) or treated with Calyculin A (red) were intracellularly stained with 0.25 ug Coralite®555 Anti-Human Phospho-S6 Ribosomal protein (Ser236) (CL555-80206, Clone:7K17), or 0.25 ug Control Antibody (blue). Cells were fixed with 4% PFA and permeabilized with 90% MeOH.