

Nur für Forschungszwecke

# Beta Actin Rekombinanter Antikörper

Katalog-Nr.:CL555-81115



## Allgemeine Informationen

<b>Katalog-Nr.:</b> CL555-81115	<b>GenBank-Zugangsnummer:</b> BC002409	<b>Reinigungsmethode:</b> Protein-A-Reinigung
<b>Größe:</b> 100ul , Konzentration: 1000 µg/ml von60 Nanodrop;	<b>GeneID (NCBI):</b> actin, beta	<b>CloneNo.:</b> 4H1
<b>Wirt:</b> Kaninchen	<b>Vollständiger Name:</b> actin, beta	<b>Empfohlene Verdünnungen:</b> IF 1:50-1:500
<b>Isotyp:</b> IgG	<b>Berechnete Masse:</b> 375 aa, 42 kDa	<b>Anregungs-/Emissionsmaxima- Wellenlängen:</b> 557 nm / 570nm
<b>Immunogen Katalognummer:</b> AG14521	<b>Beobachtete Masse:</b> 42 kDa	

## Anwendungen

<b>Geprüfte Anwendungen:</b> IF	<b>Positivkontrollen:</b> IF : MDCK-Zellen,
<b>Getestete Reaktivität:</b> Hausschwein, Human, Hund, Maus, Ratte	

## Hintergrundinformationen

Beta Actin, also named as ACTB and F-Actin, belongs to the actin family. Actins are highly conserved globular proteins that are involved in various types of cell motility and are ubiquitously expressed in all eukaryotic cells. At least six isoforms of actins are known in mammals and other vertebrates: alpha (ACTC1, cardiac muscle 1), alpha 1 (ACTA1, skeletal muscle) and 2 (ACTA2, aortic smooth muscle), beta (ACTB), gamma 1 (ACTG1) and 2 (ACTG2, enteric smooth muscle). Beta and gamma 1 are two non-muscle actin proteins. Most actins consist of 376aa, while ACTG2 (rich in muscles) has 375aa and ACTG1(found in non-muscle cells) has only 374aa. Beta actin has been widely used as the internal control in RT-PCR and Western Blotting as a 42-kDa protein. However, the 37-40, 31, 15 kDa cleaved fragment of beta actin can be generated during apoptosis process. This antibody was generated against N-terminal region of human beta actin protein and can cross-react with other actins. (9173887, 11217076, 10229193 )

## Lagerung

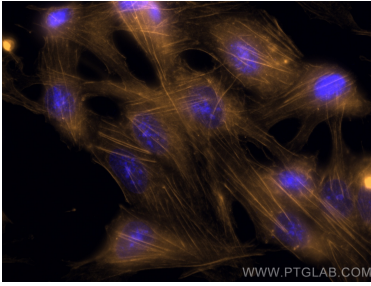
**Lagerungsbedingungen:**  
Bei -20°C lagern. Vor Licht schützen. Nach dem Versand ein Jahr stabil.  
**Lagerungspuffer:**  
BS mit 50% Glycerin, 0,05% Proclin300, 0,5% BSA, pH 7,3.  
**Aliquotieren ist nicht notwendig bei -20°C Lagerung**

**\*\*\* 20ul-Größen enthalten 0.1% BSA**

For technical support and original validation data for this product please contact:  
T: 1 (888) 4PTGLAB (1-888-478-4522) (toll free in USA), or 1(312) 455-8498 (outside USA)  
E: proteintech@ptglab.com  
W: ptglab.com

This product is exclusively available under Proteintech Group brand and is not available to purchase from any other manufacturer.

## Ausgewählte Validierungsdaten



Immunofluorescent analysis of (-20°C Methanol) fixed MDCK cells using CoraLite® Plus 555 Beta Actin antibody (CL555-81115, Clone: 4H1 ) at dilution of 1:200.