

Nur für Forschungszwecke

B23/NPM1 Monoklonaler Antikörper



Katalog-Nr.:CL568-60096

Vorgestelltes Produkt

Allgemeine Informationen

Katalog-Nr.: CL568-60096	GenBank-Zugangsnummer: BC002398	Reinigungsmethode: Protein-G-Reinigung
Größe: 100ul , Konzentration: 1000 µg/ml von4869 Nanodrop;	GeneID (NCBI): 4F12A3	CloneNo.: 4F12A3
Wirt: Maus	Vollständiger Name: nucleophosmin (nucleolar phosphoprotein B23, numatrin)	Empfohlene Verdünnungen: IF 1:500-1:2000
Isotyp: IgG1	Berechnete Masse: 33 kDa	Anregungs-/Emissionsmaxima- Wellenlängen: 568 nm / 587 nm
Immunogen Katalognummer: AG7415	Beobachtete Masse: 35-38 kDa	

Anwendungen

Geprüfte Anwendungen: FC (Intra), IF	Positivkontrollen: IF : HeLa-Zellen, HepG2-Zellen
Getestete Reaktivität: Human, Maus, Ratte	

Hintergrundinformationen

Nucleophosmin (NPM1,B23) is a putative ribosome assembly factor with a high affinity for peptides containing nuclear localization signals (NLSs). The transport of proteins across the nuclear envelope is a selective, multistep process involving several cytoplasmic factors. Proteins must be recognized as import substrates, dock at the nuclear pore complex and translocate across the nuclear envelope in an ATP-dependent fashion. Several cytosolic and nuclear proteins that are central to this process have been identified. The 38 kDa nuclear protein nucleophosmin is involved in ribosomal assembly and rRNA transport. It is an abundant protein that is highly phosphorylated by Cdc2 kinase during mitosis.

Lagerung

Lagerungsbedingungen:
Bei -20°C lagern. Vor Licht schützen. Nach dem Versand ein Jahr stabil.
Lagerungspuffer:
BS mit 50% Glycerin, 0,05% Proclin300, 0,5% BSA, pH 7,3.
Aliquotieren ist nicht notwendig bei -20°C Lagerung

*** 20ul-Größen enthalten 0.1% BSA

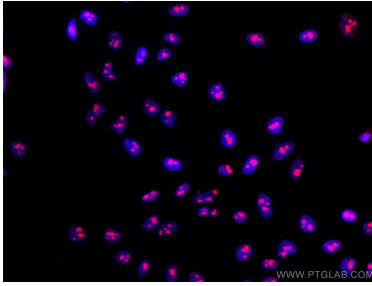
For technical support and original validation data for this product please contact:

T: 1 (888) 4PTGLAB (1-888-478-4522) (toll free
in USA), or 1(312) 455-8498 (outside USA)

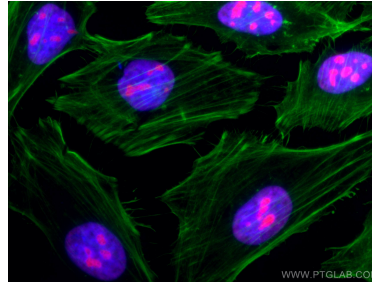
E: proteintech@ptglab.com
W: ptglab.com

This product is exclusively available under Proteintech Group brand and is not available to purchase from any other manufacturer.

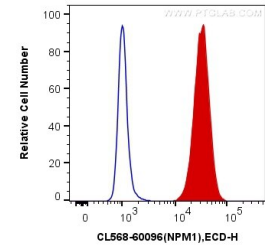
Ausgewählte Validierungsdaten



Immunofluorescent analysis of (4% PFA) fixed HepG2 cells using CoraLite@568 B23/NPM1 antibody (CL568-60096, Clone: 4F12A3) at dilution of 1:1000.



Immunofluorescent analysis of (4% PFA) fixed HeLa cells using CoraLite@568 B23/NPM1 antibody (CL568-60096, Clone: 4F12A3) at dilution of 1:1000, CL488-Phalloidin (green).



1X10⁶ HeLa cells were intracellularly stained with 0.4 ug CoraLite@568 Anti-Human B23/NPM1 (CL568-60096, Clone:4F12A3) (red), or 0.4 ug Control Antibody. Cells were fixed and permeabilized with Transcription Factor Staining Buffer Kit (PF00011).