

Nur für Forschungszwecke

Lamin B1 Monoklonaler Antikörper

Katalog-Nr.:CL568-66095

Vorgestelltes Produkt



Allgemeine Informationen

Katalog-Nr.: CL568-66095	GenBank-Zugangsnummer: BC012295	Reinigungsmethode: Protein-G-Reinigung
Größe: 100ul , Konzentration: 1000 µg/ml von4001 Nanodrop;	GeneID (NCBI): 4001	CloneNo.: 3C10G12
Wirt: Maus	Vollständiger Name: lamin B1	Empfohlene Verdünnungen: IF 1:300-1:1200
Isotyp: IgG1	Berechnete Masse: 66 kDa	Anregungs-/Emissionsmaxima- Wellenlängen: 568 nm / 587 nm
Immunogen Katalognummer: AG20522	Beobachtete Masse: 66-70 kDa	

Anwendungen

Geprüfte Anwendungen: FC (Intra), IF	Positivkontrollen: IF : HUVEC-Zellen,
Getestete Reaktivität: Human, Maus, Ratte	

Hintergrundinformationen

Lamins are components of the nuclear lamina, a fibrous layer on the nucleoplasmic side of the inner nuclear membrane, which is thought to provide a framework for the nuclear envelope and may also interact with chromatin. The nuclear lamina consists of a two-dimensional matrix of proteins located next to the inner nuclear membrane. The lamin family of proteins make up the matrix and are highly conserved in evolution. During mitosis, the lamina matrix is reversibly disassembled as the lamin proteins are phosphorylated. Vertebrate lamins consist of two types, A and B. This gene encodes one of the two B type proteins, B1. This protein is not suitable for samples where the nuclear envelope has been removed.

Lagerung

Lagerungsbedingungen:
Bei -20°C lagern. Vor Licht schützen. Nach dem Versand ein Jahr stabil.
Lagerungspuffer:
BS mit 50% Glycerin, 0,05% Proclin300, 0,5% BSA, pH 7,3.
Aliquotieren ist nicht notwendig bei -20°C Lagerung

*** 20ul-Größen enthalten 0.1% BSA

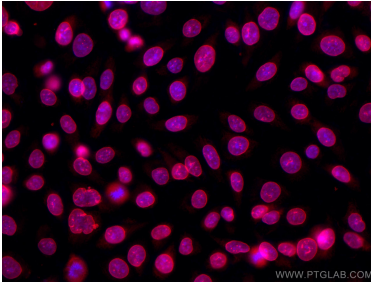
For technical support and original validation data for this product please contact:

T: 1 (888) 4PTGLAB (1-888-478-4522) (toll free
in USA), or 1(312) 455-8498 (outside USA)

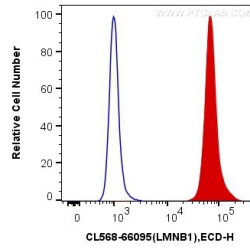
E: proteintech@ptglab.com
W: ptglab.com

This product is exclusively available under Proteintech Group brand and is not available to purchase from any other manufacturer.

Ausgewählte Validierungsdaten



Immunofluorescent analysis of (-20°C Methanol) fixed HUVEC cells using CoraLite®568 Lamin B1 antibody (CL568-66095, Clone: 3C10G12) at dilution of 1:600.



1X10⁶ HeLa cells were intracellularly stained with 0.4 ug CoraLite®568 Anti-Human Lamin B1 (CL568-66095, Clone:3C10G12) (red), or 0.4 ug Control Antibody. Cells were fixed and permeabilized with Transcription Factor Staining Buffer Kit (PF00011).