

Nur für Forschungszwecke

Beta Tubulin Polyklonaler Antikörper

Katalog-Nr.:CL594-10068



Allgemeine Informationen

Katalog-Nr.: CL594-10068	GenBank-Zugangsnummer: BC000748	Reinigungsmethode: Antigen-Affinitätsreinigung
Größe: 100ul , Konzentration: 1000 µg/ml von10381	GeneID (NCBI): von10381	Empfohlene Verdünnungen: IF 1:50-1:500
Nanodrop;	Vollständiger Name: tubulin, beta 3	Anregungs-/Emissionsmaxima-Wellenlängen: 588 nm / 604 nm
Wirt: Kaninchen	Berechnete Masse: 450 aa, 50 kDa	
Isotyp: IgG	Beobachtete Masse: 50-55 kDa	
Immunogen Katalognummer: AG0117		

Anwendungen

Geprüfte Anwendungen: FC, IF	Positivkontrollen: IF : HeLa-Zellen,
Getestete Reaktivität: Human, Maus, Ratte	

Hintergrundinformationen

There are five tubulins in human cells: alpha, beta, gamma, delta, and epsilon. Tubulins are conserved across species. They form heterodimers, which multimerize to form a microtubule filament. An alpha and beta tubulin heterodimer is the basic structural unit of microtubules. The heterodimer does not come apart, once formed. The alpha and beta tubulins, which are each about 55 kDa MW, are homologous but not identical. Alpha, beta, and gamma tubulins have all been used as loading controls. Tubulin expression may vary according to resistance to antimicrobial and antimetabolic drugs.

Lagerung

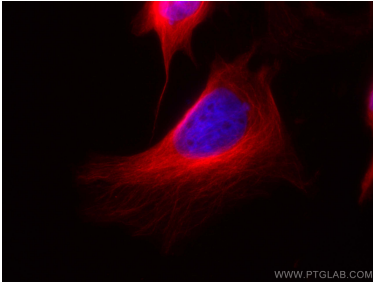
Lagerungsbedingungen:
Bei -20°C lagern. Vor Licht schützen. Nach dem Versand ein Jahr stabil.
Lagerungspuffer:
BS mit 50% Glycerin, 0,05% Proclin300, 0,5% BSA, pH 7,3.
Aliquotieren ist nicht notwendig bei -20°C Lagerung

***** 20ul-Größen enthalten 0.1% BSA**

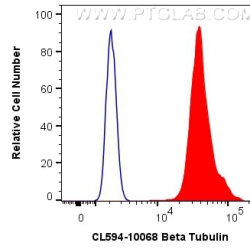
For technical support and original validation data for this product please contact:
T: 1 (888) 4PTGLAB (1-888-478-4522) (toll free in USA), or 1(312) 455-8498 (outside USA) E: proteintech@ptglab.com W: ptglab.com

This product is exclusively available under Proteintech Group brand and is not available to purchase from any other manufacturer.

Ausgewählte Validierungsdaten



Immunofluorescent analysis of (4% PFA) fixed HeLa cells using CoraLite®594 Beta Tubulin antibody (CL594-10068) at dilution of 1:200.



1X10⁶ HeLa cells were intracellularly stained with 0.4 ug CoraLite®594 Anti-Human Beta Tubulin (CL594-10068) (red), or 0.4 ug Control Antibody. Cells were fixed with 4% PFA and permeabilized with Flow Cytometry Perm Buffer (PF00011-C).