

Nur für Forschungszwecke

# NDE1 Polyklonaler Antikörper

Katalog-Nr.:CL594-10233

Vorgestelltes Produkt



## Allgemeine Informationen

<b>Katalog-Nr.:</b> CL594-10233	<b>GenBank-Zugangsnummer:</b> BC001421	<b>Reinigungsmethode:</b> Antigen-Affinitätsreinigung
<b>Größe:</b> 100ul, Konzentration: 1000 µg/ml von54820	<b>GeneID (NCBI):</b> 54820	<b>Empfohlene Verdünnungen:</b> IF 1:50-1:500
<b>Nanodrop;</b>	<b>Vollständiger Name:</b> nudE nuclear distribution gene E homolog 1 (A. nidulans)	<b>Anregungs-/Emissionsmaxima-Wellenlängen:</b> 588 nm / 604 nm
<b>Wirt:</b> Kaninchen	<b>Berechnete Masse:</b> 335 aa, 38 kDa	
<b>Isotyp:</b> IgG	<b>Beobachtete Masse:</b> 40 kDa	
<b>Immunogen Katalognummer:</b> AG0336		

## Anwendungen

<b>Geprüfte Anwendungen:</b> IF	<b>Positivkontrollen:</b> IF : humanes Mammakarzinomgewebe,
<b>Getestete Reaktivität:</b> Human, Maus, Ratte	

## Hintergrundinformationen

NDE1 (NUDE /NUDE1) is a LIS1-interacting protein. A signaling pathway containing NDE1, LIS1, and cytoplasmic dynein is conserved for eukaryotic nuclear migration and has profound impact on neuronal migration during development of the central nervous system. LIS1 and dynein have been shown to be involved in mitosis and NDE1 participates in a subset of dynein function in M phase. NDE1 is specifically phosphorylated in M phase in its serine/threonine phosphorylation motifs, probably by Cdc2 and also Erk1 and Erk2. A fraction of NDE1 binds to centrosomes strongly in interphase and is localized to mitotic spindles in early M phase. Phosphorylation of NDE1 also regulates the cell-cycle-dependent distribution, possibly by increasing its dissociation rate at the microtubule-organizing center. This antibody is a rabbit polyclonal antibody raised against a peptide mapping within human NDE1.

## Lagerung

**Lagerungsbedingungen:**  
Bei -20°C lagern. Vor Licht schützen.  
**Lagerungspuffer:**  
BS mit 50% Glycerin, 0,05% Proclin300, 0,5% BSA, pH 7,3.  
Aliquotieren ist nicht notwendig bei -20°C Lagerung

\*\*\* 20ul-Größen enthalten 0.1% BSA

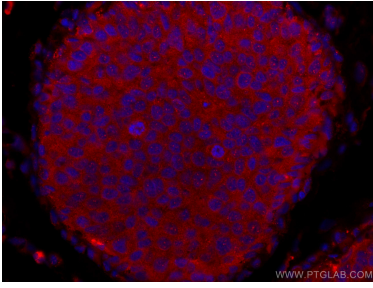
For technical support and original validation data for this product please contact:

T: 1 (888) 4PTGLAB (1-888-478-4522) (toll free in USA), or 1(312) 455-8498 (outside USA)

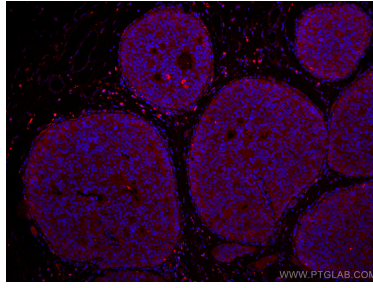
E: [proteintech@ptglab.com](mailto:proteintech@ptglab.com)  
W: [ptglab.com](http://ptglab.com)

This product is exclusively available under Proteintech Group brand and is not available to purchase from any other manufacturer.

## Ausgewählte Validierungsdaten



Immunofluorescent analysis of (4% PFA) fixed human breast cancer tissue using CoraLite®594 NDE1 antibody (CL594-10233) at dilution of 1:200.



Immunofluorescent analysis of (4% PFA) fixed human breast cancer tissue using CoraLite®594 NDE1 antibody (CL594-10233) at dilution of 1:200.