

Nur für Forschungszwecke

CD31 Polyklonaler Antikörper

Katalog-Nr.:CL594-11265

Vorgestelltes Produkt

1 Publikationen



Allgemeine Informationen

Katalog-Nr.: CL594-11265	GenBank-Zugangsnummer: BC022512	Reinigungsmethode: Antigen-Affinitätsreinigung
Größe: 100ul , Konzentration: 1000 µg/ml von5175	GeneID (NCBI): 5175	Empfohlene Verdünnungen: IF 1:50-1:500
Nanodrop;	Vollständiger Name: platelet/endothelial cell adhesion molecule	Anregungs-/Emissionsmaxima-Wellenlängen: 588 nm / 604 nm
Wirt: Kaninchen	Berechnete Masse: 83 kDa	
Isotyp: IgG		
Immunogen Katalognummer: AG1787		

Anwendungen

Geprüfte Anwendungen: IF	Positivkontrollen: IF : humanes Mammakarzinomgewebe, humanes Tonsillitisgewebe
In Publikationen genannte Anwendungen: IF	
Getestete Reaktivität: Human	
Zitierte Arten: Human	

Hintergrundinformationen

Platelet endothelial cell adhesion molecule-1 (PECAM-1, CD31) is a member of the immunoglobulin gene superfamily of cell adhesion molecules. CD31 is a transmembrane glycoprotein that is highly expressed on the surface of the endothelium, making up a large portion of its intracellular junctions. PECAM-1 is also present on the surface of hematopoietic cells and immune cells including platelets, monocytes, neutrophils, natural killer cells, megakaryocytes and some types of T-cell (PMID: 9011572). As well as its role in cell-cell adhesion, PECAM-1 functions as a signaling receptor, and is involved in important physiological events such as nitric oxide production, regulation of T-cell immunity and tolerance, leukocyte transendothelial migration and inflammation and angiogenesis (PMID: 21183735; 20978210; 17872453; 20634489).

Bemerkenswerte Veröffentlichungen

Verfasser	Pubmed ID	Journal	Anwendung
Yong-Hong Wang	34256842	Stem Cell Res Ther	IF

Lagerung

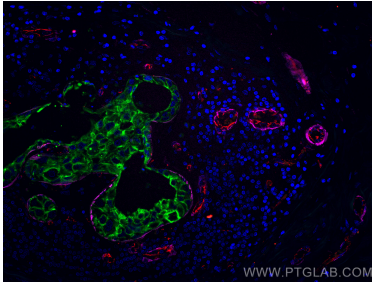
Lagerungsbedingungen:
Bei -20°C lagern. Vor Licht schützen. Nach dem Versand ein Jahr stabil.
Lagerungspuffer:
BS mit 50% Glycerin, 0,05% Proclin300, 0,5% BSA, pH 7,3.
Aliquotieren ist nicht notwendig bei -20°C Lagerung

*** 20ul-Größen enthalten 0.1% BSA

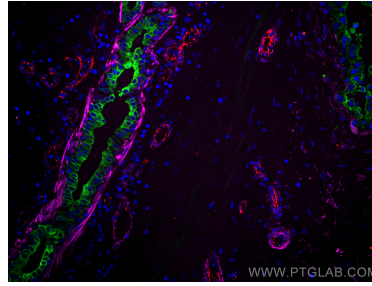
For technical support and original validation data for this product please contact:
T: 1 (888) 4PTGLAB (1-888-478-4522) (toll free in USA), or 1(312) 455-8498 (outside USA)
E: proteintech@ptglab.com
W: ptglab.com

This product is exclusively available under Proteintech Group brand and is not available to purchase from any other manufacturer.

Ausgewählte Validierungsdaten



Immunofluorescent analysis of (4% PFA) fixed human breast cancer tissue using CoraLite®594 CD31 antibody (CL594-11265) at dilution of 1:200, CoraLite®488 Cytokeratin 7 antibody (CL488-15539, green), CoraLite® Plus 647 smooth muscle actin specific antibody (CL647-67735, Clone: 1E9A11, magenta).



Immunofluorescent analysis of (4% PFA) fixed human breast cancer tissue using CoraLite®594 CD31 antibody (CL594-11265) at dilution of 1:200, CoraLite®488 Cytokeratin 7 antibody (CL488-15539, green), CoraLite® Plus 647 smooth muscle actin specific antibody (CL647-67735, Clone: 1E9A11, magenta).