

Nur für Forschungszwecke

# RBM4 Polyklonaler Antikörper

Katalog-Nr.:CL594-11614

Vorgestelltes Produkt



## Allgemeine Informationen

<b>Katalog-Nr.:</b> CL594-11614	<b>GenBank-Zugangsnummer:</b> BC021120	<b>Reinigungsmethode:</b> Antigen-Affinitätsreinigung
<b>Größe:</b> 100ul , Konzentration: 1000 µg/ml von5936	<b>GeneID (NCBI):</b> von5936	<b>Empfohlene Verdünnungen:</b> IF 1:50-1:500
<b>Nanodrop;</b>	<b>Vollständiger Name:</b> RNA binding motif protein 4	<b>Anregungs-/Emissionsmaxima-Wellenlängen:</b> 588 nm / 604 nm
<b>Wirt:</b> Kaninchen	<b>Berechnete Masse:</b> 40 kDa	
<b>Isotyp:</b> IgG		
<b>Immunogen Katalognummer:</b> AG2190		

## Anwendungen

<b>Geprüfte Anwendungen:</b> FC (Intra), IF	<b>Positivkontrollen:</b> IF : HeLa-Zellen, HepG2-Zellen
<b>Getestete Reaktivität:</b> Human, Maus, Ratte	

## Hintergrundinformationen

RBM4, RNA-binding motif protein4, contains 2 RRM-type RNA-binding motif and a retroviral-type(RT) zinc finger. RNA-binding factor participates in number of aspects of cellular processes such as alternative splicing of pre-mRNA and translation regulation. RBM4 recruits eIF4A1 to stimulate IRES-dependent translation in responds to cellular stress. Once assembled at the rHRE, the HIF2A-RBM4-eIF4E2 complex captures the 5-prime cap and targets mRNAs to polysomes for active translation, thereby evading hypoxia-induced repression of protein synthesis. This is a rabbit polyclonal antibody raised against the full-length of human RBM4

## Lagerung

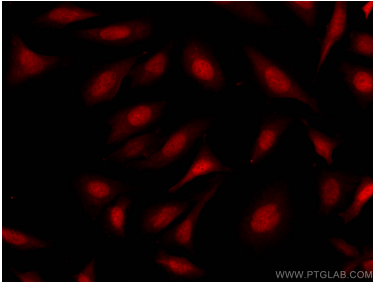
**Lagerungsbedingungen:**  
Bei -20°C lagern. Vor Licht schützen.  
**Lagerungspuffer:**  
BS mit 50% Glycerin, 0,05% Proclin300, 0,5% BSA, pH 7,3.  
**Aliquotieren ist nicht notwendig bei -20°C Lagerung**

**\*\*\* 20ul-Größen enthalten 0.1% BSA**

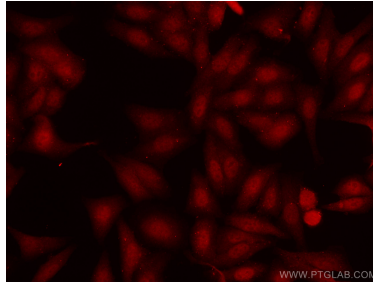
For technical support and original validation data for this product please contact:  
T: 1 (888) 4PTGLAB (1-888-478-4522) (toll free in USA), or 1(312) 455-8498 (outside USA)  
E: proteintech@ptglab.com  
W: ptglab.com

This product is exclusively available under Proteintech Group brand and is not available to purchase from any other manufacturer.

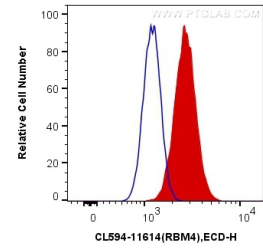
## Ausgewählte Validierungsdaten



Immunofluorescent analysis of (4% PFA) fixed HeLa cells using CoraLite@594-conjugated RBM4 antibody (CL594-11614) at dilution of 1:100.



Immunofluorescent analysis of (4% PFA) fixed HepG2 cells using CoraLite@594-conjugated RBM4 antibody (CL594-11614) at dilution of 1:100.



$1 \times 10^6$  HeLa cells were intracellularly stained with 0.4  $\mu\text{g}$  CoraLite@594 Anti-Human RBM4 (CL594-11614) (red), or 0.4  $\mu\text{g}$  Control Antibody. Cells were fixed with 4% PFA and permeabilized with Flow Cytometry Perm Buffer (PF00011-C).