

Nur für Forschungszwecke

CREST Polyklonaler Antikörper

Katalog-Nr.:CL594-12439

Vorgestelltes Produkt



Allgemeine Informationen

Katalog-Nr.: CL594-12439	GenBank-Zugangsnummer: BC034494	Reinigungsmethode: Antigen-Affinitätsreinigung
Größe: 100ul, Konzentration: 1000 µg/ml von26039	GeneID (NCBI): von26039	Empfohlene Verdünnungen: IF 1:300-1:1200
Nanodrop;	Vollständiger Name: synovial sarcoma translocation gene on chromosome 18-like 1	Anregungs-/Emissionsmaxima-Wellenlängen: 588 nm / 604 nm
Wirt: Kaninchen	Berechnete Masse: 396 aa, 43 kDa	
Isotyp: IgG	Beobachtete Masse: 55 kDa	
Immunogen Katalognummer: AG3119		

Anwendungen

Geprüfte Anwendungen: IF	Positivkontrollen: IF : HeLa-Zellen,
Getestete Reaktivität: Human, Maus, Ratte	

Hintergrundinformationen

CREST, also named as SS18-like 1(SS18L1) is a transcriptional activator that is required for calcium-dependent dendritic growth and branching in cortical neurons. It's also a nuclear protein interacts with CREB-binding protein and expressed in the developing brain. It helps regulate neuronal morphogenesis in calcium-dependent manner. The N-terminal domain of SS18L1 is required for suppressing transactivation in the basal state, while the C-terminal domain is required for calcium-induced transactivation. It's part of the CREST-BRG1 complex, a multiprotein complex that regulates promoter activation by orchestrating a calcium-dependent release of a repressor complex and a recruitment of an activator complex. This complex also binds to the NR2B promoter, and activity-dependent induction of NR2B expression involves a release of HDAC1 and recruitment of CREBBP. The calculated molecular weight of CREST is about 43 kDa, but the modified of CREST protein is 55 kDa (PMID: 25888396). CREST exists some isoforms with calculated MV 43, 40, 33 and 29 kDa.

Lagerung

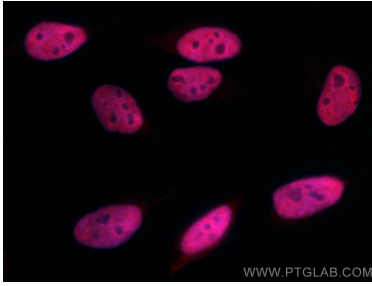
Lagerungsbedingungen:
Bei -20°C lagern. Vor Licht schützen. Nach dem Versand ein Jahr stabil.
Lagerungspuffer:
BS mit 50% Glycerin, 0,05% Proclin300, 0,5% BSA, pH 7,3.
Aliquotieren ist nicht notwendig bei -20°C Lagerung

*** 20ul-Größen enthalten 0.1% BSA

For technical support and original validation data for this product please contact:
T: 1 (888) 4PTGLAB (1-888-478-4522) (toll free in USA), or 1(312) 455-8498 (outside USA)
E: proteintech@ptglab.com
W: ptglab.com

This product is exclusively available under Proteintech Group brand and is not available to purchase from any other manufacturer.

Ausgewählte Validierungsdaten



Immunofluorescent analysis of (4% PFA) fixed HeLa cells using CoraLite®594 CREST antibody (CL594-12439) at dilution of 1:600.