

Nur für Forschungszwecke

# RAB27B Polyklonaler Antikörper

Katalog-Nr.:CL594-13412

Vorgestelltes Produkt



## Allgemeine Informationen

|   |   |   |
|---|---|---|
| <b>Katalog-Nr.:</b><br>CL594-13412                                      | <b>GenBank-Zugangsnummer:</b><br>BC027474                           | <b>Reinigungsmethode:</b><br>Antigen-Affinitätsreinigung                |
| <b>Größe:</b><br>100ul , Konzentration: 1000 µg/ml von5874<br>Nanodrop; | <b>GeneID (NCBI):</b><br>RAB27B, member RAS oncogene<br>family      | <b>Anregungs-/Emissionsmaxima-<br/>Wellenlängen:</b><br>588 nm / 604 nm |
| <b>Wirt:</b><br>Kaninchen   | <b>Vollständiger Name:</b><br>RAB27B, member RAS oncogene<br>family |   |
| <b>Isotyp:</b><br>IgG   | <b>Berechnete Masse:</b><br>218 aa, 25 kDa                          |   |
| <b>Immunogen Katalognummer:</b><br>AG4064                               | <b>Beobachtete Masse:</b><br>25-30 kDa                              |   |

## Anwendungen

**Geprüfte Anwendungen:**  
FC (Intra)

**Getestete Reaktivität:**  
Human, Maus, Ratte

## Hintergrundinformationen

The Rab27 GTPase subfamily consists of two closely related homologs, Rab27a and Rab27b. Northern blot analysis revealed that Rab27b is expressed significantly only in testis, in which the predominant transcript was 1.4 kb in size. An 8-kb mRNA of unknown origin was detected in many tissues. Rab27b is associated with tubulovesicle membranes in the parietal cell and Rab27b may play a role in stimulation-associated membrane recruitment and gastric acid secretion. Rab27b is recently reported as a marker for breast cancer progression. It regulates invasive growth and metastasis in ER-positive breast cancer cell lines, and increased expression is associated with poor prognosis in humans.

## Lagerung

**Lagerungsbedingungen:**  
Bei -20°C lagern. Vor Licht schützen.

**Lagerungspuffer:**  
BS mit 50% Glycerin, 0,05% Proclin300, 0,5% BSA, pH 7,3.

Aliquotieren ist nicht notwendig bei -20°C Lagerung

\*\*\* 20ul-Größen enthalten 0.1% BSA

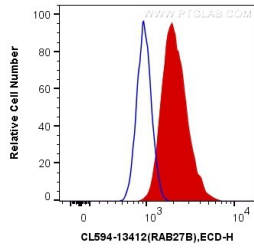
For technical support and original validation data for this product please contact:

T: 1 (888) 4PTGLAB (1-888-478-4522) (toll free  
in USA), or 1(312) 455-8498 (outside USA)

E: [proteintech@ptglab.com](mailto:proteintech@ptglab.com)  
W: [ptglab.com](http://ptglab.com)

This product is exclusively available under Proteintech Group brand and is not available to purchase from any other manufacturer.

## Ausgewählte Validierungsdaten



1X10<sup>6</sup> HeLa cells were intracellularly stained with 0.4 ug Coralite®594 Anti-Human RAB27B (CL594-13412) (red), or 0.4 ug Control Antibody. Cells were fixed with 4% PFA and permeabilized with Flow Cytometry Perm Buffer (PF00011-C).