

Nur für Forschungszwecke

KRAP/SSFA2 Polyklonaler Antikörper

Katalog-Nr.:CL594-14157



Allgemeine Informationen

Katalog-Nr.: CL594-14157	GenBank-Zugangsnummer: BC028706	Reinigungsmethode: Antigen-Affinitätsreinigung
Größe: 100ul , Konzentration: 1000 µg/ml von6744	GeneID (NCBI): von6744	Empfohlene Verdünnungen: IF 1:50-1:500
Nanodrop;	Vollständiger Name: sperm specific antigen 2	Anregungs-/Emissionsmaxima-Wellenlängen: 588 nm / 604 nm
Wirt: Kaninchen	Berechnete Masse: 138 kDa	
Isotyp: IgG		
Immunogen Katalognummer: AG5339		

Anwendungen

Geprüfte Anwendungen: IF	Positivkontrollen: IF : Maus-Pankreasgewebe,
Getestete Reaktivität: Human, Maus, Ratte	

Hintergrundinformationen

KRAP (Ki-ras-induced actin-interacting protein), also known as SSFA2, CS1 or SPAG13, is a 1,259 amino acid cytoplasmic protein associated with filamentous-actin (F-actin). KRAP is strongly expressed in pancreas and testis. It is also present in colon cancer cell lines, and the expression is up-regulated by activated K-Ras. KRAP-deficient (KO) mice display decreased adiposity and improved glucose metabolism, implicating KRAP as a potential target for the prevention or treatment of obesity and related diseases. KRAP has also been suggested to be a potential target for cancer. This antibody recognizes endogenous KRAP, which migrates with an apparent molecular mass of 180 kDa in SDS-PAGE. (PMID: 14673706; 21501587; 21873152). This antibody is CL594(Ex/Em 593 nm/614 nm) conjugated.

Lagerung

Lagerungsbedingungen:
Bei -20°C lagern. Vor Licht schützen. Nach dem Versand ein Jahr stabil.
Lagerungspuffer:
BS mit 50% Glycerin, 0,05% Proclin300, 0,5% BSA, pH 7,3.
Aliquotieren ist nicht notwendig bei -20°C Lagerung

*** 20ul-Größen enthalten 0.1% BSA

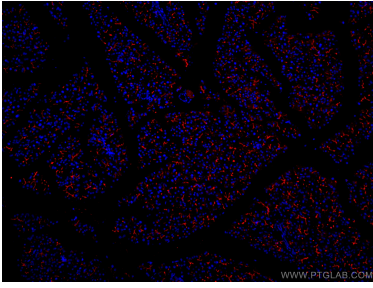
For technical support and original validation data for this product please contact:

T: 1 (888) 4PTGLAB (1-888-478-4522) (toll free in USA), or 1(312) 455-8498 (outside USA)

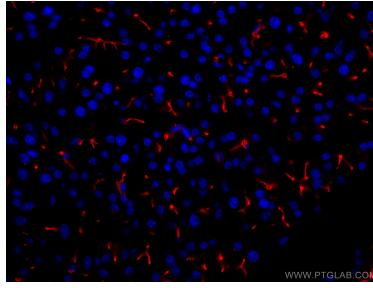
E: proteintech@ptglab.com
W: ptglab.com

This product is exclusively available under Proteintech Group brand and is not available to purchase from any other manufacturer.

Ausgewählte Validierungsdaten



Immunofluorescent analysis of (4% PFA) fixed mouse pancreas tissue using CoraLite®594 KRAP/SSFA2 antibody (CL594-14157) at dilution of 1:200.



Immunofluorescent analysis of (4% PFA) fixed mouse pancreas tissue using CoraLite®594 KRAP/SSFA2 antibody (CL594-14157) at dilution of 1:200.