

Nur für Forschungszwecke

CEP250/CNAP1 Polyklonaler Antikörper

Katalog-Nr.:CL594-14498



Allgemeine Informationen

Katalog-Nr.: CL594-14498	GenBank-Zugangsnummer: BC001433	Reinigungsmethode: Antigen-Affinitätsreinigung
Größe: 100ul , Konzentration: 1000 µg/ml von11190 Nanodrop;	GeneID (NCBI): 111190	Empfohlene Verdünnungen: IF 1:50-1:500
Wirt: Kaninchen	Vollständiger Name: centrosomal protein 250kDa	Anregungs-/Emissionsmaxima-Wellenlängen: 588 nm / 604 nm
Isotyp: IgG	Berechnete Masse: 281 kDa	
Immunogen Katalognummer: AG5925		

Anwendungen

Geprüfte Anwendungen: IF	Positivkontrollen: IF : HeLa-Zellen, MCF-7-Zellen
Getestete Reaktivität: Human	

Hintergrundinformationen

CEP250, also known as C-Nap1, is a 250 kDa coiled-coil protein that localizes to the proximal ends of mother and daughter centrioles. It is required for centriole-centriole cohesion during interphase of the cell cycle. It dissociates from the centrosomes when parental centrioles separate at the beginning of mitosis. The protein associates with and is phosphorylated by NIMA-related kinase 2, which is also associated with the centrosome.

Lagerung

Lagerungsbedingungen:
Bei -20°C lagern. Vor Licht schützen.
Lagerungspuffer:
BS mit 50% Glycerin, 0,05% Proclin300, 0,5% BSA, pH 7,3.
Aliquotieren ist nicht notwendig bei -20°C Lagerung

***** 20ul-Größen enthalten 0.1% BSA**

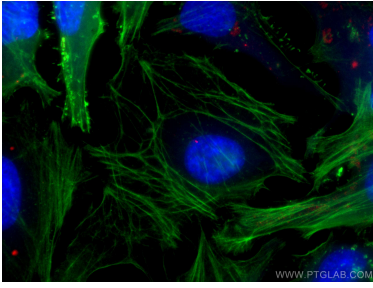
For technical support and original validation data for this product please contact:

T: 1 (888) 4PTGLAB (1-888-478-4522) (toll free in USA), or 1(312) 455-8498 (outside USA)

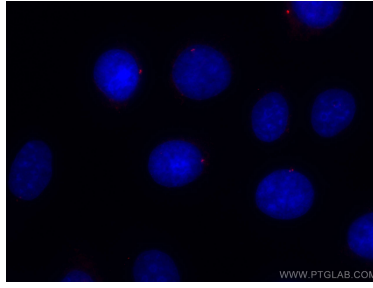
E: proteintech@ptglab.com
W: ptglab.com

This product is exclusively available under Proteintech Group brand and is not available to purchase from any other manufacturer.

Ausgewählte Validierungsdaten



Immunofluorescent analysis of (-20°C Methanol) fixed HeLa cells using CoraLite®594 CEP250/CNAP1 antibody (CL594-14498) at dilution of 1:100, CoraLite®488 Beta Actin antibody (CL488-66009, Clone: 2D4H5, green).



Immunofluorescent analysis of (-20°C Ethanol) fixed MCF-7 cells using CoraLite®594 CEP250/CNAP1 antibody (CL594-14498) at dilution of 1:100.