

Nur für Forschungszwecke

# S100 Beta Polyklonaler Antikörper

Katalog-Nr.:CL594-15146



## Allgemeine Informationen

<b>Katalog-Nr.:</b> CL594-15146	<b>GenBank-Zugangsnummer:</b> BC001766	<b>Reinigungsmethode:</b> Antigen-Affinitätsreinigung
<b>Größe:</b> 100ul , Konzentration: 1000 µg/ml von6285 Nanodrop;	<b>GeneID (NCBI):</b> S100 calcium binding protein B	<b>Empfohlene Verdünnungen:</b> IF 1:50-1:500
<b>Wirt:</b> Kaninchen	<b>Vollständiger Name:</b> S100 calcium binding protein B	<b>Anregungs-/Emissionsmaxima-Wellenlängen:</b> 588 nm / 604 nm
<b>Isotyp:</b> IgG	<b>Berechnete Masse:</b> 11 kDa	
<b>Immunogen Katalognummer:</b> AG7440		

## Anwendungen

<b>Geprüfte Anwendungen:</b> IF	<b>Positivkontrollen:</b> IF : humanes malignes Melanomgewebe, Maushirngewebe
<b>Getestete Reaktivität:</b> Human, Maus	

## Hintergrundinformationen

S100B is a member of the S100 family of proteins containing 2 EF-hand calcium-binding motifs and has been implicated in the regulation of cellular activities such as metabolism, motility and proliferation. In the nervous system, S100B is constitutively released by astrocytes into the extracellular space and at nanomolar concentrations, it can promote neurite outgrowth and protect neurons against oxidative stress. Within the central nervous system (CNS), S100B is thought to be a marker for astroglial activation, linking astrocyte dysfunction to schizophrenia. In addition to astrocytes, S100B is released from many cell types, such as, adipocytes, chondrocytes, cardiomyocytes and lymphocytes. Serum S100B represents a new biomarker for mood disorders.

## Lagerung

**Lagerungsbedingungen:**  
Bei -20°C lagern. Vor Licht schützen. Nach dem Versand ein Jahr stabil.  
**Lagerungspuffer:**  
BS mit 50% Glycerin, 0,05% Proclin300, 0,5% BSA, pH 7,3.  
Aliquotieren ist nicht notwendig bei -20°C Lagerung

\*\*\* 20ul-Größen enthalten 0.1% BSA

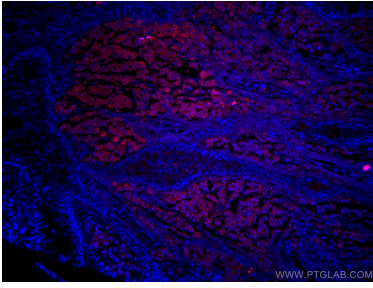
For technical support and original validation data for this product please contact:

T: 1 (888) 4PTGLAB (1-888-478-4522) (toll free  
in USA), or 1(312) 455-8498 (outside USA)

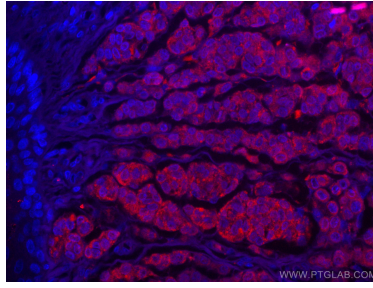
E: [proteintech@ptglab.com](mailto:proteintech@ptglab.com)  
W: [ptglab.com](http://ptglab.com)

This product is exclusively available under Proteintech Group brand and is not available to purchase from any other manufacturer.

## Ausgewählte Validierungsdaten



Immunofluorescent analysis of (4% PFA) fixed human malignant melanoma tissue using CoraLite® 594 S100 Beta antibody (CL594-15146) at dilution of 1:100.



Immunofluorescent analysis of (4% PFA) fixed human malignant melanoma tissue using CoraLite® 594 S100 Beta antibody (CL594-15146) at dilution of 1:100.