

Nur für Forschungszwecke

LONP1 Polyklonaler Antikörper

Katalog-Nr.:CL594-15440

Vorgestelltes Produkt



Allgemeine Informationen

Katalog-Nr.: CL594-15440	GenBank-Zugangsnummer: BC000235	Reinigungsmethode: Antigen-Affinitätsreinigung
Größe: 100ul , Konzentration: 1000 µg/ml von9361	GeneID (NCBI): 9361	Empfohlene Verdünnungen: IF 1:50-1:500
Nanodrop;	Vollständiger Name: Lon peptidase 1, mitochondrial	Anregungs-/Emissionsmaxima-Wellenlängen: 588 nm / 604 nm
Wirt: Kaninchen	Berechnete Masse: 106 kDa	
Isotyp: IgG	Beobachtete Masse: 100 kDa	
Immunogen Katalognummer: AG7196		

Anwendungen

Geprüfte Anwendungen: IF	Positivkontrollen: IF : HepG2-Zellen,
Getestete Reaktivität: Human, Maus, Ratte	

Hintergrundinformationen

LONP1(Lon protease homolog, mitochondrial) is also named as LONP, LONHS, HLON, LON, PRSS15, PIM1, MGC1498 and belongs to the peptidase S16 family. It seems to play a major role in the elimination of oxidatively modified proteins in the mitochondrial matrix(PMID:18021745). LONP1, also a nuclearly encoded and mitochondrially located stress-responsive protease, is involved in heme-mediated ALAS-1 turnover(PMID:21659532). It recognizes specific surface determinants or folds, initiates proteolysis at solvent-accessible sites, and generates unfolded polypeptides that are then progressively degraded(PMID:15870080). LONP1 has some isoforms with the MW of 106 kDa, 100 kDa and 86 kDa.

Lagerung

Lagerungsbedingungen:
Bei -20°C lagern. Vor Licht schützen. Nach dem Versand ein Jahr stabil.
Lagerungspuffer:
BS mit 50% Glycerin, 0,05% Proclin300, 0,5% BSA, pH 7,3.
Aliquotieren ist nicht notwendig bei -20°C Lagerung

*** 20ul-Größen enthalten 0.1% BSA

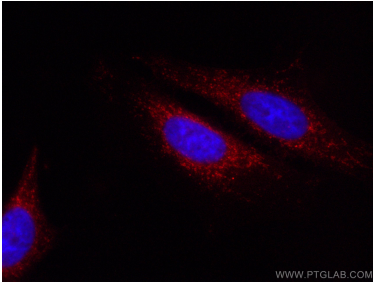
For technical support and original validation data for this product please contact:

T: 1 (888) 4PTGLAB (1-888-478-4522) (toll free in USA), or 1(312) 455-8498 (outside USA)

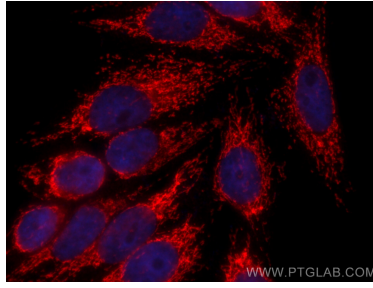
E: proteintech@ptglab.com
W: ptglab.com

This product is exclusively available under Proteintech Group brand and is not available to purchase from any other manufacturer.

Ausgewählte Validierungsdaten



Immunofluorescent analysis of (4% PFA) fixed HepG2 cells using CoraLite®594 LONP1 antibody (CL594-15440) at dilution of 1:200.



Immunofluorescent analysis of (4% PFA) fixed HepG2 cells using CoraLite®594 LONP1 antibody (CL594-15440) at dilution of 1:200.