

Nur für Forschungszwecke

NRF2, NFE2L2 Polyklonaler Antikörper



Katalog-Nr.: CL594-16396

Vorgestelltes Produkt

1 Publikationen

Allgemeine Informationen

Katalog-Nr.: CL594-16396	GenBank-Zugangsnummer: BC011558	Reinigungsmethode: Antigen-Affinitätsreinigung
Größe: 100ul, Konzentration: 1000 µg/ml von 4780 Nanodrop;	GeneID (NCBI): nuclear factor (erythroid-derived 2)-like 2	Empfohlene Verdünnungen: IF 1:50-1:500
Wirt: Kaninchen	Vollständiger Name: nuclear factor (erythroid-derived 2)-like 2	Anregungs-/Emissionsmaxima-Wellenlängen: 588 nm / 604 nm
Isotyp: IgG	Berechnete Masse: 605 aa, 68 kDa	
Immunogen Katalognummer: AG9489	Beobachtete Masse: 110 kDa	

Anwendungen

Geprüfte Anwendungen: FC (Intra), IF	Positivkontrollen: IF : HepG2-Zellen,
In Publikationen genannte Anwendungen: IF	
Getestete Reaktivität: Human, Maus, Ratte	
Zitierte Arten: Ratte	

Hintergrundinformationen

NRF2, also named as NFE2L2, belongs to the bZIP family and CNC subfamily. It is a transcription activator that binds to antioxidant response (ARE) elements in the promoter regions of target genes. NRF2 is important for the coordinated up-regulation of genes in response to oxidative stress. It may be involved in the transcriptional activation of genes of the beta-globin cluster by mediating enhancer activity of hypersensitive site 2 of the beta-globin locus control region. Nrf2 is a key player in the regulation of genes encoding for many antioxidative response enzymes. The expression of NRF2 may be induced under oxidative stress (PMID:14567983). In lung cancer, Nrf2 activation in malignant cells has been associated with tumor progression and chemotherapy resistance (PMID:20534738). Identifying patients with abnormal NRF2 expression may be important for selection for chemotherapy in NSCLC. As new investigators break into the emerging field of Nrf2 research, confusion regarding the correct migratory pattern of Nrf2 is causing doubts about the accuracy and reproducibility of published results. This letter provides solid evidence that the actually observed molecular weight of Nrf2 is about 70kDa and 95-110 kDa. (PMID: 22703241).

Bemerkenswerte Veröffentlichungen

Verfasser	Pubmed ID	Journal	Anwendung
Qi Li	36974993	Am J Chin Med	IF

Lagerung

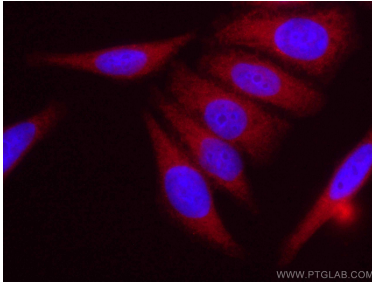
Lagerungsbedingungen:
Bei -20°C lagern. Vor Licht schützen.
Lagerungspuffer:
BS mit 50% Glycerin, 0,05% Proclin300, 0,5% BSA, pH 7,3.
Aliquotieren ist nicht notwendig bei -20°C Lagerung

*** 20ul-Größen enthalten 0.1% BSA

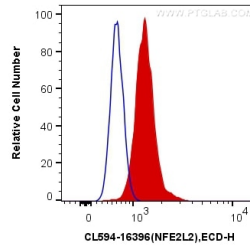
For technical support and original validation data for this product please contact:
T: 1 (888) 4PTGLAB (1-888-478-4522) (toll free in USA), or 1(312) 455-8498 (outside USA)
E: proteintech@ptglab.com
W: ptglab.com

This product is exclusively available under Proteintech Group brand and is not available to purchase from any other manufacturer.

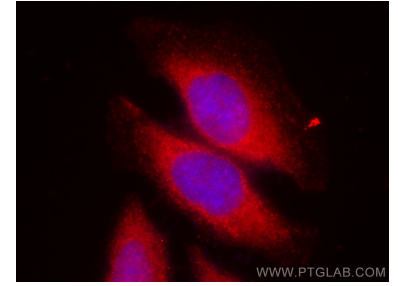
Ausgewählte Validierungsdaten



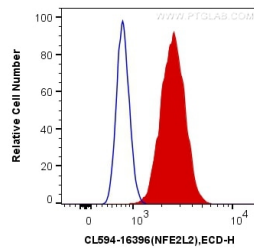
Immunofluorescent analysis of (-20°C Ethanol) fixed HepG2 cells using CoraLite®594 NRF2, NFE2L2 antibody (CL594-16396) at dilution of 1:100.



1X10⁶ MCF-7 cells were intracellularly stained with 0.2 ug CoraLite®594 Anti-Human NRF2, NFE2L2 (CL594-16396) (red), or 0.2 ug Control Antibody. Cells were fixed and permeabilized with Transcription Factor Staining Buffer Kit (PF00011).



Immunofluorescent analysis of (-20°C Methanol) fixed HepG2 cells using CoraLite®594 NRF2, NFE2L2 antibody (CL594-16396) at dilution of 1:200.



1X10⁶ MCF-7 cells were intracellularly stained with 0.4 ug CoraLite®594 Anti-Human NRF2, NFE2L2 (CL594-16396) (red), or 0.4 ug Control Antibody. Cells were fixed and permeabilized with Transcription Factor Staining Buffer Kit (PF00011).