

Nur für Forschungszwecke

# MAP2 Polyklonaler Antikörper

Katalog-Nr.:CL594-17490



## Allgemeine Informationen

<b>Katalog-Nr.:</b> CL594-17490	<b>GenBank-Zugangsnummer:</b> BC038857	<b>Reinigungsmethode:</b> Antigen-Affinitätsreinigung
<b>Größe:</b> 100ul , Konzentration: 1000 µg/ml von4133 Nanodrop;	<b>GeneID (NCBI):</b> microtubule-associated protein 2	<b>Empfohlene Verdünnungen:</b> IF 1:50-1:500
<b>Wirt:</b> Kaninchen	<b>Vollständiger Name:</b> microtubule-associated protein 2	<b>Anregungs-/Emissionsmaxima-Wellenlängen:</b> 588 nm / 604 nm
<b>Isotyp:</b> IgG	<b>Berechnete Masse:</b> 200 kDa	
<b>Immunogen Katalognummer:</b> AG11580		

## Anwendungen

<b>Geprüfte Anwendungen:</b> FC (Intra), IF	<b>Positivkontrollen:</b> IF : Rattenhirngewebe,
<b>Getestete Reaktivität:</b> Human, Maus, Ratte	

## Hintergrundinformationen

MAP2 (microtubule-associated protein 2) is a cytoskeleton protein abundant in brain and has important role in neuronal morphogenesis. Multiple high MW and low MW MAP2 isoforms are expressed within proximal segment of axons, dendrites, and cell bodies. The expression of MAP2 is regulated in both a tissue- and developmentally specific manner. The 280 kDa MAP2B is present throughout rat brain development, and the slightly larger MAP2A appears first during the end of the second week of postnatal life. MAP2C, composed of several bands of about 70 kDa, is present during early brain development, and largely disappears from the mature brain except for the retina, olfactory bulb, and cerebellum. In addition, some isoforms with lower MW around 50-60 kDa also exist. MAP2 antibodies have been widely used to mark the neuron or dendrite formation. This antibody can recognize both high MW and low MW isoforms of MAP2.

## Lagerung

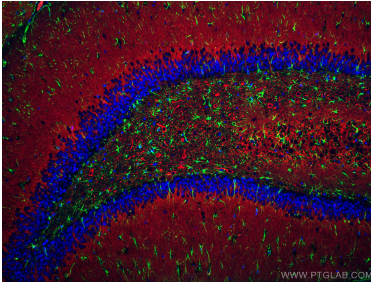
**Lagerungsbedingungen:**  
Bei -20°C lagern. Vor Licht schützen. Nach dem Versand ein Jahr stabil.  
**Lagerungspuffer:**  
BS mit 50% Glycerin, 0,05% Proclin300, 0,5% BSA, pH 7,3.  
**Aliquotieren ist nicht notwendig bei -20°C Lagerung**

**\*\*\* 20ul-Größen enthalten 0.1% BSA**

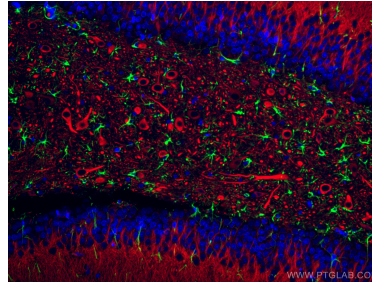
For technical support and original validation data for this product please contact:  
T: 1 (888) 4PTGLAB (1-888-478-4522) (toll free in USA), or 1(312) 455-8498 (outside USA)  
E: proteintech@ptglab.com  
W: ptglab.com

**This product is exclusively available under Proteintech Group brand and is not available to purchase from any other manufacturer.**

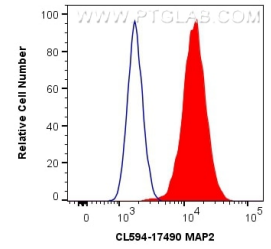
## Ausgewählte Validierungsdaten



Immunofluorescent analysis of (4% PFA) fixed rat brain tissue using CoraLite®594 MAP2 antibody (CL594-17490) at dilution of 1:200, CoraLite®488 GFAP antibody (CL488-16825, green). DAPI (blue).



Immunofluorescent analysis of (4% PFA) fixed rat brain tissue using CoraLite®594 MAP2 antibody (CL594-17490) at dilution of 1:200, CoraLite®488 GFAP antibody (CL488-16825, green). DAPI (blue).



1X10<sup>6</sup> Neuro-2a cells were intracellularly stained with 0.4 ug CoraLite®594 Anti-Human MAP2 (CL594-17490) (red), or 0.4 ug Control Antibody. Cells were fixed with 4% PFA and permeabilized with Flow Cytometry Perm Buffer (PF00011-C).