

Nur für Forschungszwecke

GLI2-Specific Polyklonaler Antikörper



Katalog-Nr.:CL594-18989

Vorgestelltes Produkt

Allgemeine Informationen

Katalog-Nr.: CL594-18989	GenBank-Zugangsnummer: NM_001081125	Reinigungsmethode: Antigen-Affinitätsreinigung
Größe: 100ul , Konzentration: 1000 µg/ml von14633	GeneID (NCBI): 14633	Anregungs-/Emissionsmaxima-Wellenlängen: 588 nm / 604 nm
Nanodrop;	Vollständiger Name: GLI-Kruppel family member GLI2	
Wirt: Kaninchen	Berechnete Masse: 168 kDa	
Isotyp: IgG	Beobachtete Masse: 167 kDa 88 kDa	

Anwendungen

Geprüfte Anwendungen:
FC (Intra)

Getestete Reaktivität:
Human, Maus, Ratte

Hintergrundinformationen

GLI2, also named as THP, belongs to the GLI C2H2-type zinc-finger protein family. GLI2 play a role during embryogenesis. It binds to the DNA sequence 5'-GAACCACCA-3' which is part of the TRE-2S regulatory element that augments the Tax-dependent enhancer of human T-cell leukemia virus type 1. It is implicated in the transduction of SHH signal. Mutation of GLI2 will cause of holoprosencephaly type 9 (HPE9). Four possible isoforms (hGli2a, b, g, and d) are formed by combinations of two independent alternative splicings, and all the isoforms could bind to a DNA motif, TRE2S. hGli2 a, b, g, and d. These isoforms encode 133-, 131-, 88-, and 86-kDa proteins, respectively.

Lagerung

Lagerungsbedingungen:
Bei -20°C lagern. Vor Licht schützen. Nach dem Versand ein Jahr stabil.

Lagerungspuffer:
BS mit 50% Glycerin, 0,05% Proclin300, 0,5% BSA, pH 7,3.

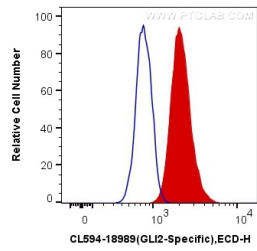
Aliquotieren ist nicht notwendig bei -20°C Lagerung

***** 20ul-Größen enthalten 0.1% BSA**

For technical support and original validation data for this product please contact:
T: 1 (888) 4PTGLAB (1-888-478-4522) (toll free in USA), or 1(312) 455-8498 (outside USA)
E: proteintech@ptglab.com
W: ptglab.com

This product is exclusively available under Proteintech Group brand and is not available to purchase from any other manufacturer.

Ausgewählte Validierungsdaten



1X10⁶ HepG2 cells were intracellularly stained with 0.4 ug CoraLite® 594 Anti-Mouse GLI2-Specific (CL594-18989) (red), or 0.4 ug Control Antibody. Cells were fixed and permeabilized with Transcription Factor Staining Buffer Kit (PF00011).