

Nur für Forschungszwecke

TET2 Polyklonaler Antikörper

Katalog-Nr.:CL594-21207

Vorgestelltes Produkt



Allgemeine Informationen

Katalog-Nr.: CL594-21207	GenBank-Zugangsnummer: BC150180	Reinigungsmethode: Antigen-Affinitätsreinigung
Größe: 100ul, Konzentration: 1000 µg/ml von54790	GeneID (NCBI): 54790	Anregungs-/Emissionsmaxima-Wellenlängen: 588 nm / 604 nm
Nanodrop;	Vollständiger Name: tet oncogene family member 2	
Wirt: Kaninchen	Berechnete Masse: 2002 aa, 224 kDa	
Isotyp: IgG	Beobachtete Masse: 130 kDa, 133 kDa, 224 kDa	
Immunogen Katalognummer: AG15583		

Anwendungen

Geprüfte Anwendungen:
FC (Intra)

Getestete Reaktivität:
Human, Maus

Hintergrundinformationen

TET2 is an enzyme which converts 5-methylcytosine (5-mC) to 5-hydroxymethylcytosine (5-hmC) in DNA and is important for normal myelopoiesis. TET2 mutations are frequently observed in myeloid malignancies, including myeloproliferative neoplasms. TET2 is broadly expressed in a variety of tissues. In healthy tissues, TET2 expression was shown to be elevated in hematopoietic cells with highest expression in granulocytes. Three isoforms of TET2 exists due to the alternative splicing. 220-250 kDa bands represent the full-length isoform; 130-133 kDa bands represent the nuclear isoforms of TET2. (PMID: 24615693) This antibody recognizes all three isoforms of TET2.

Lagerung

Lagerungsbedingungen:
Bei -20°C lagern. Vor Licht schützen. Nach dem Versand ein Jahr stabil.

Lagerungspuffer:
BS mit 50% Glycerin, 0,05% Proclin300, 0,5% BSA, pH 7,3.

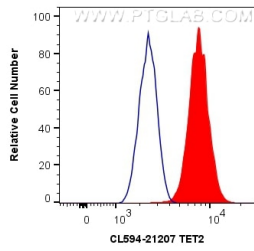
Aliquotieren ist nicht notwendig bei -20°C Lagerung

***** 20ul-Größen enthalten 0.1% BSA**

For technical support and original validation data for this product please contact:
T: 1 (888) 4PTGLAB (1-888-478-4522) (toll free in USA), or 1(312) 455-8498 (outside USA)
E: proteintech@ptglab.com
W: ptglab.com

This product is exclusively available under Proteintech Group brand and is not available to purchase from any other manufacturer.

Ausgewählte Validierungsdaten



1X10⁶ HeLa cells were intracellularly stained with 0.8 ug Coralite®594 Anti-Human TET2 (CL594-21207) (red), or 0.8 ug Control Antibody. Cells were fixed and permeabilized with Transcription Factor Staining Buffer Kit (PF00011).