

Nur für Forschungszwecke

RRBP1 Polyklonaler Antikörper

Katalog-Nr.:CL594-22015



Allgemeine Informationen

Katalog-Nr.: CL594-22015	GenBank-Zugangsnummer: BC128577	Reinigungsmethode: Antigen-affinitätsgereinigt
Größe: 100ul , Konzentration: 1000 µg/ml von6238 Nanodrop;	GeneID (NCBI): Vollständiger Name: ribosome binding protein 1 homolog 180kDa (dog)	Empfohlene Verdünnungen: IF 1:50-1:500 Anregungs-/Emissionsmaxima-Wellenlängen: 588 nm / 604 nm
Wirt: Kaninchen	Berechnete Masse: 1410 aa, 152 kDa	
Isotyp: IgG	Beobachtete Masse: 180 kDa, 109 kDa	
Immunogen Katalognummer: AG16648		

Anwendungen

Geprüfte Anwendungen: FC (Intra), IF	Positivkontrollen: IF : HepG2-Zellen,
Getestete Reaktivität: Human, Maus	

Hintergrundinformationen

Ribosome-binding protein 1 (RRBP1) is an endoplasmic reticulum membrane protein. It is a 1410 amino acid protein composed of a hydrophobic NH2-terminus that includes a transmembrane domain, a highly conserved tandem repeat (ribosome-binding domain), and an acidic coiled-coil COOH-terminal domain. RRBP1 acts as a ribosome receptor and mediates interaction between the ribosome and the endoplasmic reticulum membrane. It is also involved in early cardiac morphogenesis. (PMID: 22709790; 8812507; 7686155)

Lagerung

Lagerungsbedingungen:
Bei -20°C lagern. Vor Licht schützen.
Lagerungspuffer:
BS mit 50% Glycerin, 0,05% Proclin300, 0,5% BSA, pH 7,3.
Aliquotieren ist nicht notwendig bei -20°C Lagerung

*** 20ul-Größen enthalten 0.1% BSA

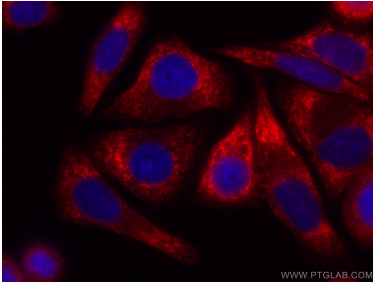
For technical support and original validation data for this product please contact:

T: 1 (888) 4PTGLAB (1-888-478-4522) (toll free in USA), or 1(312) 455-8498 (outside USA)

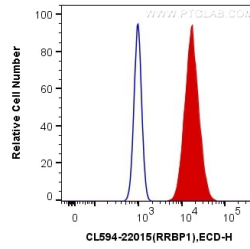
E: proteintech@ptglab.com
W: ptglab.com

This product is exclusively available under Proteintech Group brand and is not available to purchase from any other manufacturer.

Ausgewählte Validierungsdaten



Immunofluorescent analysis of (-20°C Ethanol) fixed HepG2 cells using CoraLite®594-conjugated RRBP1 antibody (CL594-22015) at dilution of 1:200.



1X10⁶ HeLa cells were intracellularly stained with 0.4 ug CoraLite®594 Anti-Human RRBP1 (CL594-22015) (red), or 0.4 ug Control Antibody. Cells were fixed with 4% PFA and permeabilized with Flow Cytometry Perm Buffer (PF00011-C).