

Nur für Forschungszwecke

KI67 Polyklonaler Antikörper

Katalog-Nr.:CL594-27309

Vorgestelltes Produkt



Allgemeine Informationen

Katalog-Nr.: CL594-27309	GenBank-Zugangsnummer: NM_002417	Reinigungsmethode: Antigen-Affinitätsreinigung
Größe: 100ul , Konzentration: 1000 µg/ml von4288 Nanodrop;	GeneID (NCBI): antigen identified by monoclonal antibody Ki-67	Empfohlene Verdünnungen: IF 1:50-1:500
Wirt: Kaninchen	Vollständiger Name: antigen identified by monoclonal antibody Ki-67	Anregungs-/Emissionsmaxima- Wellenlängen: 588 nm / 604 nm
Isotyp: IgG	Berechnete Masse: 359 kDa	
Immunogen Katalognummer: AG26266		

Anwendungen

Geprüfte Anwendungen: IF	Positivkontrollen: IF : HeLa-Zellen,
Getestete Reaktivität: Human	

Hintergrundinformationen

The Ki-67 protein (also known as MKI67) is a cellular marker for proliferation. Ki67 is present during all active phases of the cell cycle (G1, S, G2 and M), but is absent in resting cells (G0). Cellular content of Ki-67 protein markedly increases during cell progression through S phase of the cell cycle. Therefore, the nuclear expression of Ki67 can be evaluated to assess tumor proliferation by immunohistochemistry. It has been demonstrated to be of prognostic value in breast cancer. In head and neck cancer, several studies have reported an association between high proliferative activity and poorer prognosis.

Lagerung

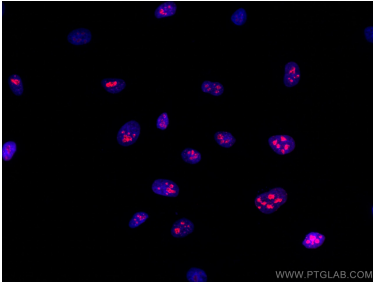
Lagerungsbedingungen:
Bei -20°C lagern. Vor Licht schützen.
Lagerungspuffer:
BS mit 50% Glycerin, 0,05% Proclin300, 0,5% BSA, pH 7,3.
Aliquotieren ist nicht notwendig bei -20°C Lagerung

***** 20ul-Größen enthalten 0.1% BSA**

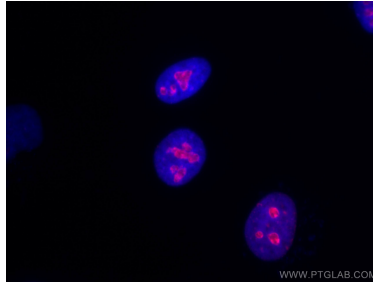
For technical support and original validation data for this product please contact:
T: 1 (888) 4PTGLAB (1-888-478-4522) (toll free in USA), or 1(312) 455-8498 (outside USA)
E: proteintech@ptglab.com
W: ptglab.com

This product is exclusively available under Proteintech Group brand and is not available to purchase from any other manufacturer.

Ausgewählte Validierungsdaten



Immunofluorescent analysis of (4% PFA) fixed HeLa cells using CoraLite@594 KI67 antibody (CL594-27309) at dilution of 1:200.



Immunofluorescent analysis of (4% PFA) fixed HeLa cells using CoraLite@594 KI67 antibody (CL594-27309) at dilution of 1:200.