

Nur für Forschungszwecke

Rabbit IgG control Polyklonaler Antikörper



Katalog-Nr.:CL594-30000

Allgemeine Informationen

Katalog-Nr.: CL594-30000	GenBank-Zugangsnummer: GeneID (NCBI):	Reinigungsmethode: N/A
Größe: 100ul , Konzentration: 1000 µg/ml von Nanodrop;	Vollständiger Name:	Anregungs-/Emissionsmaxima- Wellenlängen: 588 nm / 604 nm
Wirt: Kaninchen		
Isotyp: IgG		

Anwendungen

Geprüfte Anwendungen:
FC
Getestete Reaktivität:

Hintergrundinformationen

This product is Normal rabbit IgG (without immunized) which purified with Protein A. Normal Rabbit IgG is an isotype control antibody, which is used to estimate the non-specific binding of target primary antibodies due to Fc receptor binding or other protein-protein interactions. An isotype control antibody should have the same immunoglobulin type and be used at the same concentration as the test antibody.

Lagerung

Lagerungsbedingungen:
Bei -20°C lagern. Vor Licht schützen. Nach dem Versand ein Jahr stabil.
Lagerungspuffer:
BS mit 50% Glycerin, 0,05% Proclin300, 0,5% BSA, pH 7,3.
Aliquotieren ist nicht notwendig bei -20°C Lagerung

*** 20ul-Größen enthalten 0.1% BSA

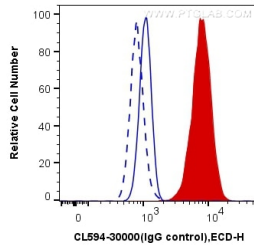
For technical support and original validation data for this product please contact:

T: 1 (888) 4PTGLAB (1-888-478-4522) (toll free
in USA), or 1(312) 455-8498 (outside USA)

E: proteintech@ptglab.com
W: ptglab.com

This product is exclusively available under Proteintech Group brand and is not available to purchase from any other manufacturer.

Ausgewählte Validierungsdaten



1X10⁶ HeLa cells were intracellularly stained with 0.4 ug CoraLite®594-conjugated Rabbit IgG control (CL594-30000) (blue, solid line) or 0.4 ug CoraLite®594 Anti-Galectin-3 (CL594-14979) (red), or not stained (blank) (blue, dashed line). Cells were fixed with 4% PFA and permeabilized with Flow Cytometry Perm Buffer (PF00011-C).