

Nur für Forschungszwecke

GFP tag Polyklonaler Antikörper

Katalog-Nr.:CL594-50430



Allgemeine Informationen

Katalog-Nr.: CL594-50430	GenBank-Zugangsnummer: U73901	Reinigungsmethode: Antigen-Affinitätsreinigung
Größe: 100ul , Konzentration: 1000 µg/ml von Nanodrop;	GeneID (NCBI): Vollständiger Name:	Empfohlene Verdünnungen: IF 1:50-1:500
Wirt: Kaninchen	Berechnete Masse: 26 kDa	Anregungs-/Emissionsmaxima- Wellenlängen: 588 nm / 604 nm
Isotyp: IgG		
Immunogen Katalognummer: AG2128		

Anwendungen

Geprüfte Anwendungen: IF	Positivkontrollen: IF : Transfizierte HEK-293-Zellen,
Getestete Reaktivität: Aequorea Victoria, Rekombinanten Protein	

Hintergrundinformationen

Protein tags are protein or peptide sequences located either on the C- or N- terminal of the target protein, which facilitates one or several of the following characteristics: solubility, detection, purification, localization and expression. Green fluorescence protein(GFP) is a protein composed of 238 amino acid residues(26.9kDa) derived from the Jellyfish Aequorea victoria, which emits green light(emission peak at 509nm) when excited by blue light(excitation peak at 395nm). GFP has become an invaluable tool in cell biology research, since its intrinsic fluorescence can be visualized in living cells. EGFP contains the double-amino-acid substitutions Phe-64 to Leu and Ser-65 to Thr(previously published as GFPmut1; PMID: 8707053). In contrast to wtGFP, EGFP has a single, strong, red-shifted excitation peak at 488nm. GFPmut1 fluoresces 35-fold more intensely than wtGFP when excited at 488nm, due to an increase in its extinction coefficient(E_m). This antibody is a rabbit polyclonal antibody raised against full-length eGFP and reactive against all variants of Aequorea victoria GFP such as S65T-GFP, RS-GFP, YFP, CFP and eGFP.

Lagerung

Lagerungsbedingungen:
Bei -20°C lagern. Vor Licht schützen.
Lagerungspuffer:
BS mit 50% Glycerin, 0,05% Proclin300, 0,5% BSA, pH 7,3.
Aliquotieren ist nicht notwendig bei -20°C Lagerung

*** 20ul-Größen enthalten 0.1% BSA

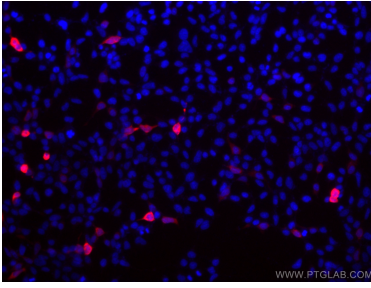
For technical support and original validation data for this product please contact:

T: 1 (888) 4PTGLAB (1-888-478-4522) (toll free
in USA), or 1(312) 455-8498 (outside USA)

E: proteintech@ptglab.com
W: ptglab.com

This product is exclusively available under Proteintech Group brand and is not available to purchase from any other manufacturer.

Ausgewählte Validierungsdaten



Immunofluorescent analysis of (-20°C Ethanol) fixed Transfected HEK-293 cells using CoraLite®594 GFP tag antibody (CL594-50430) at dilution of 1:200.