

Nur für Forschungszwecke

Beta Actin Monoklonaler Antikörper

Katalog-Nr.:CL594-60008



Allgemeine Informationen

Katalog-Nr.: CL594-60008	GenBank-Zugangsnummer: BC002409	Reinigungsmethode: Caprylsäure/Ammoniumsulfat-Präzipitation
Größe: 100ul , Konzentration: 1000 µg/ml von60 Nanodrop;	GeneID (NCBI): Vollständiger Name: actin, beta	CloneNo.: 7D2C10
Wirt: Maus	Berechnete Masse: 375 aa, 42 kDa	Empfohlene Verdünnungen: WB 1:1000-1:4000 IF 1:200-1:1000
Isotyp: IgM	Immunogen Katalognummer: AG0297	Anregungs-/Emissionsmaxima-Wellenlängen: 588 nm / 604 nm

Anwendungen

Geprüfte Anwendungen: IF, WB	Positivkontrollen: WB : HepG2-Zellen, HEK-293-Zellen, HeLa-Zellen IF : HeLa-Zellen, MDCK-Zellen
Getestete Reaktivität: Human, Maus, Pflanze, Ratte, Zebrafisch	

Hintergrundinformationen

Beta actin, also named as ACTB and F-Actin, belongs to the actin family. Actins are highly conserved globular proteins that are involved in various types of cell motility and are ubiquitously expressed in all eukaryotic cells. At least six isoforms of actins are known in mammals and other vertebrates: alpha (ACTC1, cardiac muscle 1), alpha 1 (ACTA1, skeletal muscle) and 2 (ACTA2, aortic smooth muscle), beta (ACTB), gamma 1 (ACTG1) and 2 (ACTG2, enteric smooth muscle). Beta and gamma 1 are two non-muscle actin proteins. Most actins consist of 376aa, while ACTG2 (rich in muscles) has 375aa and ACTG1(found in non-muscle cells) has only 374aa. Beta actin has been widely used as the internal control in RT-PCR and Western Blotting as a 42-kDa protein. However, the 37-40 kDa cleaved fragment of beta actin can be generated during apoptosis process. This antibody is conjugated with CL594,Ex/Em 593 nm/614 nm.

Lagerung

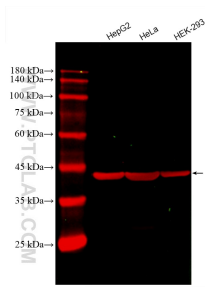
Lagerungsbedingungen:
Bei -20°C lagern. Vor Licht schützen. Nach dem Versand ein Jahr stabil.
Lagerungspuffer:
BS mit 50% Glycerin, 0,05% Proclin300, 0,5% BSA, pH 7,3.
Aliquotieren ist nicht notwendig bei -20°C Lagerung

***** 20ul-Größen enthalten 0.1% BSA**

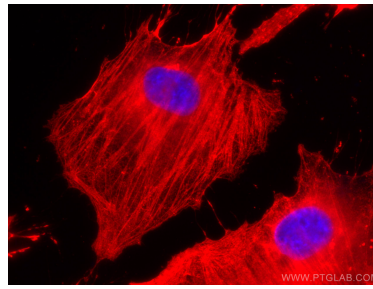
For technical support and original validation data for this product please contact:
T: 1 (888) 4PTGLAB (1-888-478-4522) (toll free in USA), or 1(312) 455-8498 (outside USA)
E: proteintech@ptglab.com
W: ptglab.com

This product is exclusively available under Proteintech Group brand and is not available to purchase from any other manufacturer.

Ausgewählte Validierungsdaten



Various lysates were subjected to SDS PAGE followed by western blot with CL594-60008 (Beta Actin antibody) at dilution of 1:2000 incubated at room temperature for 1.5 hours.



Immunofluorescent analysis of (-20°C Methanol) fixed HeLa cells using CoraLite®594 Beta Actin antibody (CL594-60008, Clone: 7D2C10) at dilution of 1:200.