

# ATF4 Monoklonaler Antikörper

Katalog-Nr.:CL594-60035

1 Publikationen

## Allgemeine Informationen

<b>Katalog-Nr.:</b> CL594-60035	<b>GenBank-Zugangsnummer:</b> BC022088	<b>Reinigungsmethode:</b> Protein-G-Reinigung
<b>Größe:</b> 100ul , Konzentration: 1000 µg/ml von468 Nanodrop und 1000 µg/ml durch die Bradford-Methode mit BSA als Standard;	<b>GeneID (NCBI):</b> Vollständiger Name: activating transcription factor 4 (tax- responsive enhancer element B67)	<b>CloneNo.:</b> 3E4C5 <b>Anregungs-/Emissionsmaxima- Wellenlängen:</b> 588 nm / 604 nm
<b>Wirt:</b> Maus	<b>Berechnete Masse:</b> 39 kDa	
<b>Isotyp:</b> IgG1		
<b>Immunogen Katalognummer:</b> AG1279		

## Anwendungen

**Geprüfte Anwendungen:**  
FC (Intra)

**In Publikationen genannte Anwendungen:**  
WB

**Getestete Reaktivität:**  
Human

**Zitierte Arten:**  
Maus

## Hintergrundinformationen

ATF4 is a transcription factor, that accumulates predominantly in osteoblasts, where it regulates terminal osteoblast differentiation and bone formation. As a basic leucine-zipper (bZip) transcription factor, ATF4 can regulate amino acid metabolism, cellular redox state, and anti-stress responses. It also regulates age-related and diet-induced obesity and glucose homeostasis in mammals, and has conserved metabolic functions in flies. Due to its location at chromosome 22q13, a region linked to schizophrenia, ATF4 is considered as a positional candidate gene for schizophrenia. Otherwise, since ATF4 is induced by tumour microenvironmental factors, and regulates processes relevant to cancer progression, it might serve as a potential therapeutic target in cancer. This antibody is a mouse monoclonal antibody raised against full length human ATF4 antigen. This antibody is conjugated with CL594, Ex/Em 593 nm/614 nm.

## Bemerkenswerte Veröffentlichungen

Verfasser	Pubmed ID	Journal	Anwendung
Zhixiong Liu	35143418	J Clin Invest	WB

## Lagerung

**Lagerungsbedingungen:**  
Bei -20°C lagern. Vor Licht schützen. Nach dem Versand ein Jahr stabil.

**Lagerungspuffer:**  
BS mit 50% Glycerin, 0,05% Proclin300, 0,5% BSA, pH 7,3.

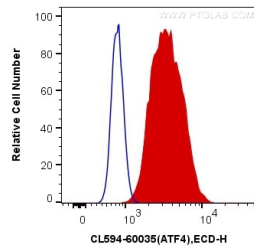
Aliquotieren ist nicht notwendig bei -20°C Lagerung

\*\*\* 20ul-Größen enthalten 0.1% BSA

For technical support and original validation data for this product please contact:  
T: 1 (888) 4PTGLAB (1-888-478-4522) (toll free in USA), or 1(312) 455-8498 (outside USA)  
E: [proteintech@ptglab.com](mailto:proteintech@ptglab.com)  
W: [ptglab.com](http://ptglab.com)

This product is exclusively available under Proteintech Group brand and is not available to purchase from any other manufacturer.

## Ausgewählte Validierungsdaten



1X10<sup>6</sup> HeLa cells were intracellularly stained with 0.2 ug CoraLite®594 Anti-Human ATF4 (CL594-60035, Clone:3E4C5) (red), or 0.2 ug Mouse IgG1 Isotype Control (CL594-66360, Clone: T1F8D3F10) (blue). Cells were fixed with 4% PFA and permeabilized with Flow Cytometry Perm Buffer (PF00011-C).