

Nur für Forschungszwecke

IL-18 Monoklonaler Antikörper

Katalog-Nr.:CL594-60070

Vorgestelltes Produkt



Allgemeine Informationen

Katalog-Nr.: CL594-60070	GenBank-Zugangsnummer: BC007461	Reinigungsmethode: Protein-A-Reinigung
Größe: 100ul, Konzentration: 1000 µg/ml von3606	GeneID (NCBI): 5C6F8	CloneNo.: 5C6F8
Nanodrop;	Vollständiger Name: IL-18	Anregungs-/Emissionsmaxima- Wellenlängen: 588 nm / 604 nm
Wirt: Maus	Berechnete Masse: 193 aa, 22 kDa	
Isotyp: IgG2b	Beobachtete Masse: 24 kDa	
Immunogen Katalognummer: AG1063		

Anwendungen

Geprüfte Anwendungen:
FC (Intra)

Getestete Reaktivität:
Hamster, Human

Hintergrundinformationen

IL18, is a proinflammatory cytokine involved in the development of Th1 cells and in immune response. It can stimulate the NK cells and certain T cells to release IFN gamma which plays an important role in activating the macrophages or other cells. IL18 has been demonstrated to have the potential to enhance Fas ligand-mediated cytotoxicity, which is increased in PE and regulates placental apoptosis. IL18 is synthesized as a 24 kDa precursor and then cleaved into a biologically activate 18 kDa form.

Lagerung

Lagerungsbedingungen:
Bei -20°C lagern. Vor Licht schützen. Nach dem Versand ein Jahr stabil.
Lagerungspuffer:
BS mit 50% Glycerin, 0,05% Proclin300, 0,5% BSA, pH 7,3.
Aliquotieren ist nicht notwendig bei -20°C Lagerung

*** 20ul-Größen enthalten 0.1% BSA

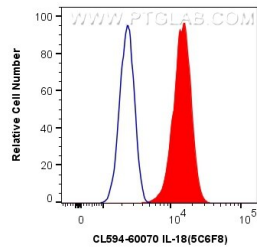
For technical support and original validation data for this product please contact:

T: 1 (888) 4PTGLAB (1-888-478-4522) (toll free
in USA), or 1(312) 455-8498 (outside USA)

E: proteintech@ptglab.com
W: ptglab.com

This product is exclusively available under Proteintech Group brand and is not available to purchase from any other manufacturer.

Ausgewählte Validierungsdaten



1X10⁶ HeLa cells were intracellularly stained with 0.4 ug Coralite®594 Anti-Human IL-18 (CL594-60070, Clone:5C6F8) (red), or 0.4 ug Control Antibody. Cells were fixed with 4% PFA and permeabilized with Flow Cytometry Perm Buffer (PF00011-C).