

Nur für Forschungszwecke

NF-L Monoklonaler Antikörper

Katalog-Nr.:CL594-60189



Allgemeine Informationen

Katalog-Nr.: CL594-60189	GenBank-Zugangsnummer: BC039237	Reinigungsmethode: Protein-G-Reinigung
Größe: 100ul , Konzentration: 1000 µg/ml von4747	GeneID (NCBI): 4747	CloneNo.: 5C12G4
Nanodrop;	Vollständiger Name: neurofilament, light polypeptide	Empfohlene Verdünnungen: IF 1:50-1:500
Wirt: Maus	Berechnete Masse: 543 aa, 62 kDa	Anregungs-/Emissionsmaxima-Wellenlängen: 588 nm / 604 nm
Isotyp: IgG1	Beobachtete Masse: 65 kDa	
Immunogen Katalognummer: AG15178		

Anwendungen

Geprüfte Anwendungen: FC (Intra), IF	Positivkontrollen: IF : Maushirngewebe,
Getestete Reaktivität: Hausschwein, Human, Maus, Ratte	

Hintergrundinformationen

NEFL, also named as NF68 and NF-L, belongs to the intermediate filament family. Neurofilaments are the 10 nm intermediate filaments found specifically in neurons. They are a major component of the cell's cytoskeleton, and provide support for normal axonal radial growth. Neurofilaments usually contain three intermediate filament proteins: L, M, and H, which are involved in the maintenance of neuronal caliber. The names given to the three major neurofilament subunits are based upon the apparent molecular weight of the mammalian subunits on SDS-PAGE: NF-L, 65-68 kDa; NF-M,145-160 kDa and NF-H, 200-220 kDa.This antibody is specific to NEFL.

Lagerung

Lagerungsbedingungen:
Bei -20°C lagern. Vor Licht schützen. Nach dem Versand ein Jahr stabil.
Lagerungspuffer:
BS mit 50% Glycerin, 0,05% Proclin300, 0,5% BSA, pH 7,3.
Aliquotieren ist nicht notwendig bei -20°C Lagerung

***** 20ul-Größen enthalten 0.1% BSA**

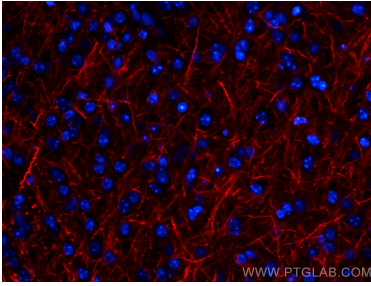
For technical support and original validation data for this product please contact:

T: 1 (888) 4PTGLAB (1-888-478-4522) (toll free in USA), or 1(312) 455-8498 (outside USA)

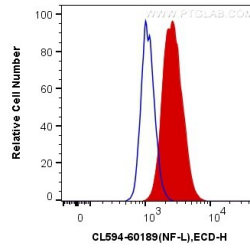
E: proteintech@ptglab.com
W: ptglab.com

This product is exclusively available under Proteintech Group brand and is not available to purchase from any other manufacturer.

Ausgewählte Validierungsdaten



Immunofluorescent analysis of (4% PFA) fixed mouse brain tissue using Coralite® 594 NF-L antibody (CL594-60189, Clone: 5C12G4) at dilution of 1:200.



1X10⁶ SH-SY5Y cells were intracellularly stained with 0.4 ug Coralite® 594 Anti-Human NF-L (CL594-60189, Clone: 5C12G4) (red), or 0.4 ug Mouse IgG1 Isotype Control (CL594-66360, Clone: T1F8D3F10) (blue). Cells were fixed with 4% PFA and permeabilized with Flow Cytometry Perm Buffer (PF00011-C).