

Nur für Forschungszwecke

CD23 Monoklonaler Antikörper

Katalog-Nr.: CL594-60208



Allgemeine Informationen

Katalog-Nr.: CL594-60208	GenBank-Zugangsnummer: BC064417	Reinigungsmethode: Protein-A-Reinigung
Größe: 100ul, Konzentration: 1000 µg/ml von2208	GeneID (NCBI): 4C7C9	CloneNo.: 4C7C9
Nanodrop;	Vollständiger Name: Fc fragment of IgE, low affinity II, receptor for (CD23)	Empfohlene Verdünnungen: IF 1:50-1:500
Wirt: Maus	Berechnete Masse: 321 aa, 36 kDa	Anregungs-/Emissionsmaxima-Wellenlängen: 588 nm / 604 nm
Isotyp: IgG2a	Immunogen Katalognummer: AG0425	

Anwendungen

Geprüfte Anwendungen: IF	Positivkontrollen: IF : humanes Tonsillitisgewebe, humanes Lymphomgewebe
Getestete Reaktivität: Human	

Hintergrundinformationen

CD23, also known as low affinity immunoglobulin epsilon Fc receptor, is a transmembrane glycoprotein present on a subpopulation of B lymphocytes in germinal centres, EBV-transformed B-lymphoblastoid cell lines, follicular dendritic cells, and a subpopulation of peripheral blood cells. CD23 has essential roles in the regulation of IgE production and in the differentiation of B-cells. And the antibody is conjugated with CL594, Ex/Em 593 nm/614 nm.

Lagerung

Lagerungsbedingungen:
Bei -20°C lagern. Vor Licht schützen. Nach dem Versand ein Jahr stabil.
Lagerungspuffer:
BS mit 50% Glycerin, 0,05% Proclin300, 0,5% BSA, pH 7,3.
Aliquotieren ist nicht notwendig bei -20°C Lagerung

***** 20ul-Größen enthalten 0.1% BSA**

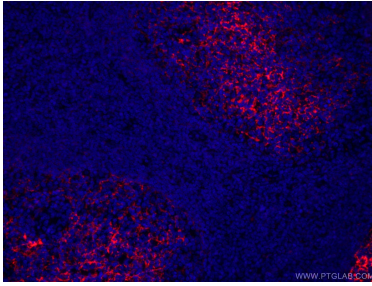
For technical support and original validation data for this product please contact:

T: 1 (888) 4PTGLAB (1-888-478-4522) (toll free in USA), or 1(312) 455-8498 (outside USA)

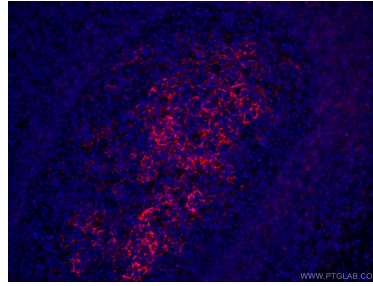
E: proteintech@ptglab.com
W: ptglab.com

This product is exclusively available under Proteintech Group brand and is not available to purchase from any other manufacturer.

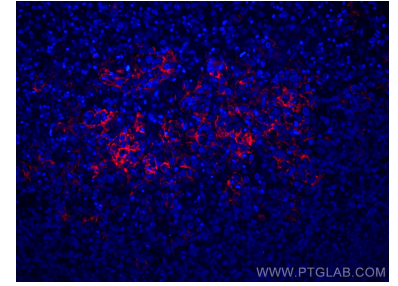
Ausgewählte Validierungsdaten



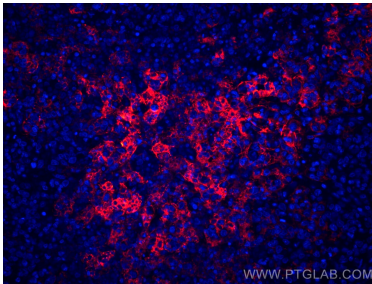
Immunofluorescent analysis of (4% PFA) fixed human tonsillitis tissue using CL594-60208 (CD23 antibody) at dilution of 1:50.



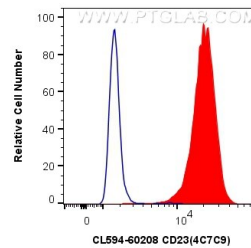
Immunofluorescent analysis of (4% PFA) fixed human tonsillitis tissue using CL594-60208 (CD23 antibody) at dilution of 1:50.



Immunofluorescent analysis of (4% PFA) fixed human lymphoma tissue using CoraLite@594 CD23 antibody (CL594-60208, Clone: 4C7C9) at dilution of 1:200.



Immunofluorescent analysis of (4% PFA) fixed human lymphoma tissue using CoraLite@594 CD23 antibody (CL594-60208, Clone: 4C7C9) at dilution of 1:200.



1×10^6 U-937 cells were intracellularly stained with 0.4 μ g CoraLite@594 Anti-Human CD23 (CL594-60208, Clone:4C7C9) (red), or 0.4 μ g Mouse IgG2a Isotype Control (CL594-66360-2, Clone: K11A1B2A2) (blue). Cells were fixed with 4% PFA and permeabilized with Flow Cytometry Perm Buffer (PF00011-C).