

Nur für Forschungszwecke

PGRMC2 Monoklonaler Antikörper

Katalog-Nr.:CL594-60249

Vorgestelltes Produkt



Allgemeine Informationen

Katalog-Nr.: CL594-60249	GenBank-Zugangsnummer: BC016692	Reinigungsmethode: Protein-A-Reinigung
Größe: 100ul , Konzentration: 1000 µg/ml von10424 Nanodrop;	GeneID (NCBI): 10424	CloneNo.: 5F10D7
Wirt: Maus	Vollständiger Name: progesterone receptor membrane component 2	Empfohlene Verdünnungen: IF 1:50-1:500
Isotyp: IgG2a	Berechnete Masse: 223 aa, 24 kDa	Anregungs-/Emissionsmaxima- Wellenlängen: 588 nm / 604 nm
Immunogen Katalognummer: AG20077	Beobachtete Masse: 24+28 kDa	

Anwendungen

Geprüfte Anwendungen: IF	Positivkontrollen: IF : humanes Zervixkarzinomgewebe,
Getestete Reaktivität: Human, Maus	

Hintergrundinformationen

Membrane-associated progesterone receptor component 2 (PGRMC2), also known as DG6 or PMBP, belongs to the cytochrome b5 family. This protein might play a role in cancer. The gene of PGRMC2 maps to chromosome 4q26, and encodes a 223-amino acid single-pass membrane protein with a cytochrome b5 heme-binding domain in its cytoplasmic domain. PGRMC2 has a calculated molecular weight of 24 kDa. The band of about 28 kDa detected by this monoclonal antibody is unknown but may represent phosphorylated form of PGRMC2 (PMID: 28104494).

Lagerung

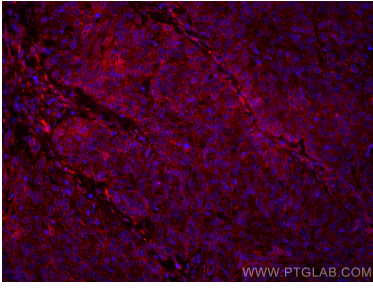
Lagerungsbedingungen:
Bei -20°C lagern. Vor Licht schützen.
Lagerungspuffer:
BS mit 50% Glycerin, 0,05% Proclin300, 0,5% BSA, pH 7,3.
Aliquotieren ist nicht notwendig bei -20°C Lagerung

*** 20ul-Größen enthalten 0.1% BSA

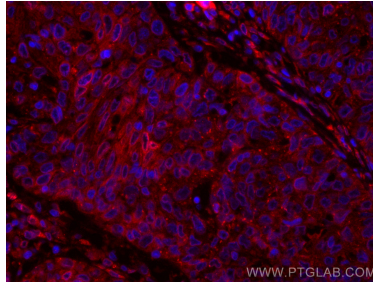
For technical support and original validation data for this product please contact:
T: 1 (888) 4PTGLAB (1-888-478-4522) (toll free in USA), or 1(312) 455-8498 (outside USA)
E: proteintech@ptglab.com
W: ptglab.com

This product is exclusively available under Proteintech Group brand and is not available to purchase from any other manufacturer.

Ausgewählte Validierungsdaten



Immunofluorescent analysis of (4% PFA) fixed human cervical cancer tissue using CoraLite®594 PGRMC2 antibody (CL594-60249, Clone: 5F10D7) at dilution of 1:200.



Immunofluorescent analysis of (4% PFA) fixed human cervical cancer tissue using CoraLite®594 PGRMC2 antibody (CL594-60249, Clone: 5F10D7) at dilution of 1:200.