

Nur für Forschungszwecke

Ras Monoklonaler Antikörper

Katalog-Nr.:CL594-60309

Vorgestelltes Produkt



Allgemeine Informationen

Katalog-Nr.:

CL594-60309

Größe:

100ul, Konzentration: 1000 µg/ml von3845

Nanodrop;

Wirt:

Maus

Isotyp:

IgG1

Immunogen Katalognummer:

AG2700

GenBank-Zugangsnummer:

BC013572

GeneID (NCBI):

3845

Vollständiger Name:

v-Ki-ras2 Kirsten rat sarcoma viral oncogene homolog

Berechnete Masse:

188 aa, 21 kDa

Reinigungsmethode:

Protein-G-Reinigung

CloneNo.:

4H4G7

Anregungs-/Emissionsmaxima-

Wellenlängen:

588 nm / 604 nm

Anwendungen

Geprüfte Anwendungen:

FC (Intra)

Getestete Reaktivität:

Hausschwein, Human, Maus, Ratte

Hintergrundinformationen

The 21 kDa guanine-nucleotide binding proteins (K-Ras, H-Ras, and N-Ras) belong to the Ras oncogene family, whose members are related to the transforming genes of mammalian sarcoma retroviruses. K-Ras, H-Ras, and N-Ras have similar structure and sequences. These proteins can bind GTP and GDP, and they have intrinsic GTPase activity. The ras genes are ubiquitously expressed although mRNA analysis suggests different level expression in tissue. Mutations in each ras gene frequently were found in different tumors, suggesting their involvement in the development of specific neoplasia. This antibody can recognize K-Ras, H-Ras, and N-Ras.

Lagerung

Lagerungsbedingungen:

Bei -20°C lagern. Vor Licht schützen.

Lagerungspuffer:

BS mit 50% Glycerin, 0,05% Proclin300, 0,5% BSA, pH 7,3.

Aliquotieren ist nicht notwendig bei -20°C Lagerung

*** 20ul-Größen enthalten 0.1% BSA

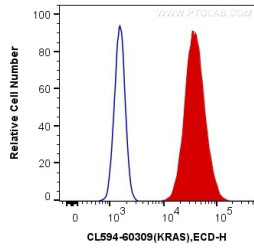
For technical support and original validation data for this product please contact:

T: 1 (888) 4PTGLAB (1-888-478-4522) (toll free in USA), or 1(312) 455-8498 (outside USA)

E: proteintech@ptglab.com
W: ptglab.com

This product is exclusively available under Proteintech Group brand and is not available to purchase from any other manufacturer.

Ausgewählte Validierungsdaten



1X10⁶ HeLa cells were intracellularly stained with 0.2 ug Coralite®594 Anti-Human pan Ras (CL594-60309, Clone:4H4G7) (red), or 0.2 ug Mouse IgG1 Isotype Control (CL594-66360, Clone: T1F8D3F10) (blue). Cells were fixed with 4% PFA and permeabilized with Flow Cytometry Perm Buffer (PF00011-C).