

Nur für Forschungszwecke

c-SRC Monoklonaler Antikörper

Katalog-Nr.:CL594-60315

1 Publikationen



Allgemeine Informationen

Katalog-Nr.: CL594-60315	GenBank-Zugangsnummer: BC011566	Reinigungsmethode: Protein-A-Reinigung
Größe: 100ul , Konzentration: 1000 µg/ml von6714 Nanodrop;	GeneID (NCBI): v-src sarcoma (Schmidt-Ruppin A-2) viral oncogene homolog (avian)	CloneNo.: 5E10C4
Wirt: Maus	Vollständiger Name: v-src sarcoma (Schmidt-Ruppin A-2) viral oncogene homolog (avian)	Empfohlene Verdünnungen: IF 1:50-1:500
Isotyp: IgG2b	Berechnete Masse: 60 kDa	Anregungs-/Emissionsmaxima- Wellenlängen: 588 nm / 604 nm
Immunogen Katalognummer: AG22306	Beobachtete Masse: 60 kDa	

Anwendungen

Geprüfte Anwendungen: FC (Intra), IF	Positivkontrollen: IF : MCF-7-Zellen, humanes Mammakarzinomgewebe
In Publikationen genannte Anwendungen: IF	
Getestete Reaktivität: Hamster, Human, Maus	
Zitierte Arten: Human	

Hintergrundinformationen

SRC, also named as SRC1 and p60-Src, belongs to the protein kinase superfamily, Tyr protein kinase family and SRC subfamily. It is a non-receptor protein tyrosine kinase that plays pivotal roles in numerous cellular processes such as proliferation, migration, and transformation. In concert with PTK2B, SRC plays an important role in osteoclastic bone resorption. It promotes energy production in osteoclasts by activating mitochondrial cytochrome C oxidase.

Bemerkenswerte Veröffentlichungen

Verfasser	Pubmed ID	Journal	Anwendung
Zhenzhen Pan	35303882	Mol Cancer	IF

Lagerung

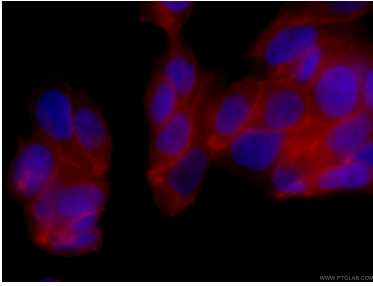
Lagerungsbedingungen:
Bei -20°C lagern. Vor Licht schützen. Nach dem Versand ein Jahr stabil.
Lagerungspuffer:
BS mit 50% Glycerin, 0,05% Proclin300, 0,5% BSA, pH 7,3.
Aliquotieren ist nicht notwendig bei -20°C Lagerung

*** 20ul-Größen enthalten 0.1% BSA

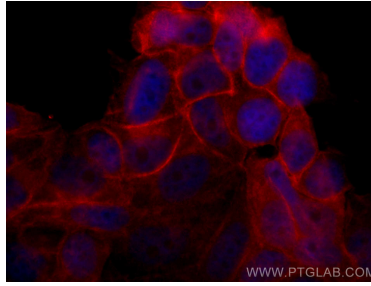
For technical support and original validation data for this product please contact:
T: 1 (888) 4PTGLAB (1-888-478-4522) (toll free in USA), or 1(312) 455-8498 (outside USA)
E: proteintech@ptglab.com
W: ptglab.com

This product is exclusively available under Proteintech Group brand and is not available to purchase from any other manufacturer.

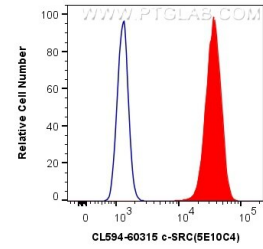
Ausgewählte Validierungsdaten



Immunofluorescent analysis of (4% PFA) fixed MCF-7 cells using CL594-60315 (c-SRC antibody) at dilution of 1:100.



Immunofluorescent analysis of (4% PFA) fixed MCF-7 cells using CoraLite®594 c-SRC antibody (CL594-60315, Clone: 5E10C4) at dilution of 1:200.



1×10^6 MCF-7 cells were intracellularly stained with 0.4 μ g CoraLite®594 Anti-Human c-SRC (CL594-60315, Clone:5E10C4) (red), or 0.4 μ g Mouse IgG2b Isotype Control (CL594-66360-3, Clone: K11B8C4B5) (blue). Cells were fixed with 4% PFA and permeabilized with Flow Cytometry Perm Buffer (PF00011-C).