

Nur für Forschungszwecke

VCP Monoklonaler Antikörper

Katalog-Nr.:CL594-60316

Vorgestelltes Produkt



Allgemeine Informationen

Katalog-Nr.: CL594-60316	GenBank-Zugangsnummer: BC007562	Reinigungsmethode: Protein-G-Reinigung
Größe: 100ul , Konzentration: 1000 µg/ml von7415 Nanodrop;	GeneID (NCBI): von7415	CloneNo.: 2A4B10
Wirt: Maus	Vollständiger Name: valosin-containing protein	Empfohlene Verdünnungen: IF 1:50-1:500
Isotyp: IgG1	Berechnete Masse: 89 kDa	Anregungs-/Emissionsmaxima- Wellenlängen: 588 nm / 604 nm
Immunogen Katalognummer: AG1002	Beobachtete Masse: 89 kDa	

Anwendungen

Geprüfte Anwendungen: IF	Positivkontrollen: IF : HeLa-Zellen,
Getestete Reaktivität: Human, Maus	

Hintergrundinformationen

VCP(Valosin-containing protein), also known as TER ATPase and 15S Mg²⁺-ATPase p97 subunit, belongs to the AAA ATPase family. VCP was first identified as a result of attempts to clone a putative peptide hormone called valosin. It was found that the cloned cDNA encoded a ubiquitously expressed 90 kDa cytosolic protein, termed VCP, which showed none of the characteristics of a peptide hormone precursor(PMID:1382975). Defects in VCP are the cause of inclusion body myopathy with early-onset Paget disease and frontotemporal dementia (IBMPFD) and amyotrophic lateral sclerosis type 14 with or without frontotemporal dementia (ALS14). VCP has a calculated molecular weight of 89 kDa and an apparent molecular weight of 90-100 kDa (PMID: 15732117, 1382975).

Lagerung

Lagerungsbedingungen:
Bei -20°C lagern. Vor Licht schützen. Nach dem Versand ein Jahr stabil.
Lagerungspuffer:
BS mit 50% Glycerin, 0,05% Proclin300, 0,5% BSA, pH 7,3.
Aliquotieren ist nicht notwendig bei -20°C Lagerung

*** 20ul-Größen enthalten 0.1% BSA

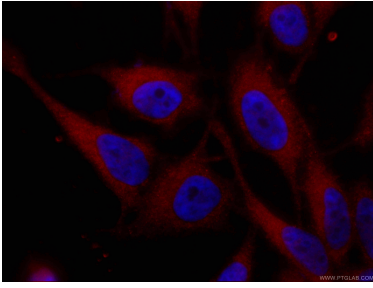
For technical support and original validation data for this product please contact:

T: 1 (888) 4PTGLAB (1-888-478-4522) (toll free
in USA), or 1(312) 455-8498 (outside USA)

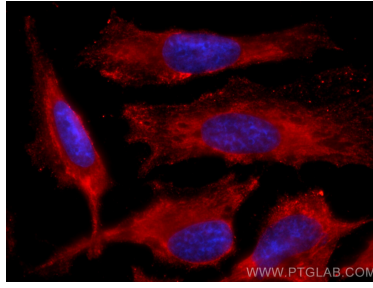
E: proteintech@ptglab.com
W: ptglab.com

This product is exclusively available under Proteintech Group brand and is not available to purchase from any other manufacturer.

Ausgewählte Validierungsdaten



Immunofluorescent analysis of (-20°C Ethanol) fixed HeLa cells using CL594-60316 (VCP antibody) at dilution of 1:100.



Immunofluorescent analysis of (-20°C Ethanol) fixed HeLa cells using CoraLite®594 VCP antibody (CL594-60316, Clone: 2A4B10) at dilution of 1:200.