

Allgemeine Informationen

Katalog-Nr.: CL594-60335	GenBank-Zugangsnummer: BC141838	Reinigungsmethode: Protein-A-Reinigung
Größe: 100ul , Konzentration: 1000 µg/ml von999 Nanodrop;	GeneID (NCBI): cadherin 1, type 1, E-cadherin (epithelial)	CloneNo.: 6B11F11
Wirt: Maus	Vollständiger Name: cadherin 1, type 1, E-cadherin (epithelial)	Empfohlene Verdünnungen: IF 1:50-1:500
Isotyp: IgG2b	Berechnete Masse: 882 aa, 97 kDa	Anregungs-/Emissionsmaxima- Wellenlängen: 588 nm / 604 nm
Immunogen Katalognummer: AG15085	Beobachtete Masse: 120 kDa	

Anwendungen

Geprüfte Anwendungen:

IF

Getestete Reaktivität:

Hausschwein, Human

Positivkontrollen:

IF : humanes Mammakarzinomgewebe,

Hintergrundinformationen

Cadherins are a family of transmembrane glycoproteins that mediate calcium-dependent cell-cell adhesion and play an important role in the maintenance of normal tissue architecture. E-cadherin (epithelial cadherin), also known as CDH1 (cadherin 1) or CAM 120/80, is a classical member of the cadherin superfamily which also include N-, P-, R-, and B-cadherins. It has been regarded as a marker for spermatogonial stem cells in mice(PMID:23509752). E-cadherin is expressed on the cell surface in most epithelial tissues. The extracellular region of E-cadherin establishes calcium-dependent homophilic trans binding, providing specific interaction with adjacent cells, while the cytoplasmic domain is connected to the actin cytoskeleton through the interaction with p120-, α -, β -, and γ -catenin (plakoglobin). E-cadherin is important in the maintenance of the epithelial integrity, and is involved in mechanisms regulating proliferation, differentiation, and survival of epithelial cell. E-cadherin may also play a role in tumorigenesis. It is considered to be an invasion suppressor protein and its loss is an indicator of high tumor aggressiveness.

Lagerung

Lagerungsbedingungen:

Bei -20°C lagern. Vor Licht schützen. Nach dem Versand ein Jahr stabil.

Lagerungspuffer:

BS mit 50% Glycerin, 0,05% Proclin300, 0,5% BSA, pH 7,3.

Aliquotieren ist nicht notwendig bei -20°C Lagerung

*** 20ul-Größen enthalten 0.1% BSA

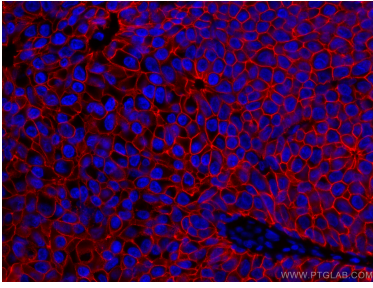
For technical support and original validation data for this product please contact:

T: 1 (888) 4PTGLAB (1-888-478-4522) (toll free
in USA), or 1(312) 455-8498 (outside USA)

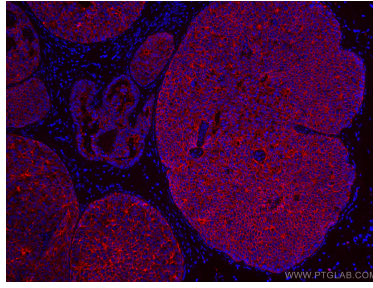
E: proteintech@ptglab.com
W: ptglab.com

This product is exclusively available under Proteintech Group brand and is not available to purchase from any other manufacturer.

Ausgewählte Validierungsdaten



Immunofluorescent analysis of (4% PFA) fixed human breast cancer tissue using CoraLite®594 E-cadherin antibody (CL594-60335, Clone: 6B11F11) at dilution of 1:200.



Immunofluorescent analysis of (4% PFA) fixed human breast cancer tissue using CoraLite®594 E-cadherin antibody (CL594-60335, Clone: 6B11F11) at dilution of 1:200.