

Nur für Forschungszwecke

# KLRG1 Monoklonaler Antikörper

Katalog-Nr.:CL594-65084



## Allgemeine Informationen

<b>Katalog-Nr.:</b> CL594-65084	<b>GenBank-Zugangsnummer:</b> BC101953	<b>Reinigungsmethode:</b> Affinitätsreinigung
<b>Größe:</b> 100ug, 0.5 mg/ml	<b>GeneID (NCBI):</b> 50928	<b>CloneNo.:</b> 2F1
<b>Wirt:</b> Golden Syrian Hamster	<b>Vollständiger Name:</b> killer cell lectin-like receptor subfamily G, member 1	<b>Anregungs-/Emissionsmaxima- Wellenlängen:</b> 588 nm / 604 nm
<b>Isotyp:</b> IgG		

## Anwendungen

**Geprüfte Anwendungen:**  
FC

**Getestete Reaktivität:**  
Maus

## Hintergrundinformationen

KLRG1 (killer cell lectin-like receptor subfamily G, member 1) is a C-type lectin inhibitory receptor that contains an immunoreceptor tyrosine-based inhibitory motif (ITIM) in its cytoplasmic domain. KLRG1 is expressed by subsets of NK and T cells, existing both as a monomer and as a disulfide-linked homodimer (PMID: 10741410; 19604491). It is considered to be a cell differentiation marker for NK and T cells and is strongly induced by viral and other infections (PMID: 20373518). Through interactions with members of the cadherin family, KLRG1 plays an inhibitory role on NK- and T-cell function (PMID: 19009530; 20373518).

## Lagerung

**Lagerungsbedingungen:**  
Store at 2-8°C. Avoid exposure to light. Stable for one year after shipment.

**Lagerungspuffer:**  
PBS with 0.09% sodium azide.

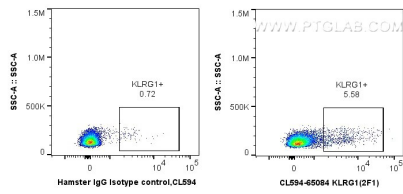
For technical support and original validation data for this product please contact:

T: 1 (888) 4PTGLAB (1-888-478-4522) (toll free  
in USA), or 1(312) 455-8498 (outside USA)

E: [proteintech@ptglab.com](mailto:proteintech@ptglab.com)  
W: [ptglab.com](http://ptglab.com)

**This product is exclusively available under Proteintech Group brand and is not available to purchase from any other manufacturer.**

## Ausgewählte Validierungsdaten



1X10<sup>6</sup> mouse splenocytes were surface stained with 0.5 ug CoraLite®594 Anti-Mouse KLRG1 (CL594-65084, Clone: 2F1), or 0.5 ug Isotype Control. Cells were not fixed.