

Nur für Forschungszwecke

# IgG1 Isotype Control Monoklonaler Antikörper



Katalog-Nr.:CL594-65124

## Allgemeine Informationen

<b>Katalog-Nr.:</b> CL594-65124	<b>GenBank-Zugangsnummer:</b> GeneID (NCBI): 16017	<b>Reinigungsmethode:</b> Affinitätsreinigung
<b>Größe:</b> 100ug , 500 µg/ml	<b>Vollständiger Name:</b> immunoglobulin heavy constant gamma 1 (G1m marker)	<b>CloneNo.:</b> MOPC-21
<b>Wirt:</b> Maus		<b>Anregungs-/Emissionsmaxima-Wellenlängen:</b> 588 nm / 604 nm
<b>Isotyp:</b> IgG1		

## Anwendungen

**Geprüfte Anwendungen:**  
FC  
**Getestete Reaktivität:**

## Hintergrundinformationen

The MOPC-21 immunoglobulin is useful as an isotype-matched control. The MOPC-21 immunoglobulin has an unknown binding specificity and is used as an isotype control for mouse IgG1 antibodies. This antibody has been quality-tested for flow cytometry as negative control.

## Lagerung

**Lagerungsbedingungen:**  
Store at 2-8°C. Avoid exposure to light. Stable for one year after shipment.  
**Lagerungspuffer:**  
BS mit 50% Glycerin, 0,05% Proclin300, 0,5% BSA, pH 7,3.

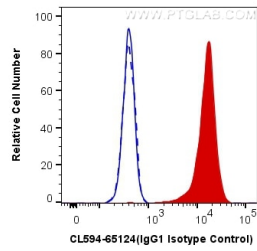
For technical support and original validation data for this product please contact:

T: 1 (888) 4PTGLAB (1-888-478-4522) (toll free in USA), or 1(312) 455-8498 (outside USA)

E: [proteintech@ptglab.com](mailto:proteintech@ptglab.com)  
W: [ptglab.com](http://ptglab.com)

**This product is exclusively available under Proteintech Group brand and is not available to purchase from any other manufacturer.**

## Ausgewählte Validierungsdaten



1X10<sup>6</sup> Jurkat cells were surface stained with 0.4 ug CoraLite®594 Anti-Mouse IgG1 Isotype Control (CL594-65124, Clone: MOPC-21) (blue, solid), or CoraLite®594 Anti-Human CD45 (CL594-65109, Clone: HI 30) (red), or unstained (blue, dashed). Cells were not fixed.